

# PSWC Newsletter

THE PASTEL SOCIETY OF THE WEST COAST

SPRING/SUMMER 2010

## calendar

- May 21, 2010 Shipped works deadline,  
Pastels USA
- May 29, 2010 Receiving Pastels USA at the Art  
Museum of Los Gatos
- June 1, 2010 Membership Show Prospectus  
is online.
- June 21, 2010 Membership Show Submission  
deadline
- June 13, 2010 Reception and Awards,  
Pastels USA, 1-4 pm
- June 26, 2010 General Membership Meeting  
and Terri Ford Painting Demo,  
1 to 4 pm, at the Museum  
of Los Gatos, in their garden area.
- July 9, 2010 Pastels USA Exhibit closes
- July 10, 2010 Pickup, Pastels USA, 11-3 pm,  
Art Museum of Los Gatos
- Aug. 5, 2010 Deadline to receive shipped work,  
Membership Show
- Aug. 7, 2010 Receiving for Membership Show at  
Placer Arts, Auburn
- Aug. 12, 2010 2010 Membership Show Opens,  
Placer Arts Reception,  
808 Lincoln Way, Auburn.
- Sept. 4, 2010 Membership Show Walk Through  
with Margot Schulzke, 1 pm
- Sept. 11, 2010 Demonstration by Waif Mullins,  
1 pm, Placer Arts
- Oct. 2, 2010 Reception, Membership Show,  
Placer Arts, Auburn; 1:00 pm.
- Oct. 2, 2010 Membership Show closes  
(at conclusion of Reception.)
- Oct. 2, 2010 Pickup, Membership Show

## Letter from the President

Spring is here at last, and with it comes a busy time for PSWC members. We have not just one but two exciting events in the near future. First on the agenda is the 24th Annual International Open Exhibition which will be in Los Gatos, CA this year at the Los Gatos Museum. The exhibit will hang from June 3 to July 9. Please mark your calendars to come and visit the exhibit and attend the reception on June 13. Once again we will have a beautiful full color catalog designed by Maria Sylvester including all of the paintings accepted into the show.

On June 26 from 1 to 4 there will be a brief membership meeting and a wonderful demonstration by PSWC Distinguished Pastellist, Terri Ford. This will be a great time to meet and talk with fellow pastel artists.

Then in August the Membership Show will take place. It will be held at Placer Arts in the lovely town of Auburn, CA. This show will hang from August 12 through October 2. I encourage you to get your images in and enter this year. Declined entries for Pastels USA may be entered in the Membership Show. Remember also that you can now earn part of the requirement for becoming a signature member if you receive a place award. Also associate and signature/DP paintings are judged separately. Along with this show we will have a demonstration by Distinguished Pastellist, Waif Mullins as well as another day of framing and product demonstrations. Dates and times will be sent to you in the near future in the Membership Show prospectus so you can plan your trip to the foothills.

I hope to see you at one or all of our upcoming events. Remember to bring along your artist friends to these events. It would be great to get even more members to join PSWC who enjoy the art of pastel.

*Tina Moore*

## PSWC 2010 Membership Show

Placer Arts, in Auburn California will host the 2010 Membership Show. We have exhibited twice before at Placer Arts, including one national open show, with great results. The site, located in Auburn's colorful turn-of-the-twentieth-century downtown, at 808 Lincoln Way, has lots of foot traffic.

Judged by Jane Hofstetter, the show will open August 12, 2010 and close October 2. The Prospectus will be on line and mailed May 1, 2010, with the entry deadline set at June 21. Plans are in the works for several special events during this show. Please check out our website monthly, as information will be posted as confirmed. This show is open to every member, with award competition offered at both Associate and Signature member levels.

**Thank you to Member Show Chair Bev Field for this report**  
**For Information, contact: [bevfield@sbcglobal.net](mailto:bevfield@sbcglobal.net)**

## Understanding and Using Creative Thinking

One “sinkhole” in painting that I see frequently among the broad intermediate range of artists is a difficulty in getting into a creative/intuitive mental state. Yet if there is anything that takes a painter beyond the intermediate into advanced levels, I believe it is a recognition and understanding of how creative processes function. That’s ironic, because the majority of artists seem to be “right-brained,” intuitive people. I suspect that to recognize the difference between creative and critical thinking requires some “left-brain” analysis. So, let’s go for it! Knowledge is power.



Canyon de Chelly by Margot Schulzke

To understand what creative thinking is, we have to understand what it is NOT. Creative thinking and critical thinking are two altogether different processes. Don’t let one get in the way of the other. Creative thinking is UNcritical, playful, loose, free, whimsical, surprising, intuitive, adventuresome (willing to take risks), irresponsible, humorous, romantic, fluid, may or may not be logical, and is sometimes ambiguous. It is considered “right brain” activity.

Critical thinking is analytical, concrete, logical, rigid, serious, urgent, responsible, not creative but necessary in the development and application of creative thought. It is considered left brain activity.

One clear-cut example of the use of both creative and critical thought is **brainstorming** – uncritically putting down every idea to solve a problem, no matter how ridiculous, without evaluating its merit, is **right brain creativity**. It is possibility thinking; you use it in the process of doing a series of thumbnail sketches, based on one subject. After a list of ideas is made, or sketches are done, **evaluating**—culling the best and discarding the worst is **critical**

**thinking**. The two thought processes should be done *in sequence*, not attempted simultaneously, as critical thinking not only puts a damper on creativity. It requires a gear shift. When you are moving forward at high speed, you don’t want to put a car into reverse.

**Both processes** are usually necessary. Drawing is primarily “left brain”—it is typically analytical, critical thinking. You must use proportion, relative sizes, plumb lines, negative shapes, etc., which are all highly analytical. Design involves some critical thinking, too.

**Moving into** the intuitive phase of a painting is, for me, a noticeable mental gear-shift. I can feel it taking place. It may not be the same for everyone, but many artists function this way. Once I have a drawing and design on the painting surface, and I have blocked in the dark values and color masses, I am on a roll and in total concentration, moving intuitively. This mode moves *further into* the right brain as I get to the finishing stages of the work, and if I am not distracted, freewheeling takes over. If someone speaks to me at this point, I’ll jump.

1) **Getting ideas:** Best ideas come when you get a lot of ideas. That is how thumbnails work when you do a series of them. Brainstorm with yourself regarding a particular subject. What can you do with it to improve it, to make it exciting, surprising? What sounds outrageous to you? Play with it. Don’t settle for the first idea out of the barn door.

2) Roger von Oech, author of *A Whack on the Side of the Head*, a book on creativity, suggests looking for the second right answer.

3) *Change the questions you ask.* Ask “what if?” and “why not?” Remember there is more than one right answer. You are not doing math; you are creating art.

4) Know the rules so you can break them; then do it. Degas was a champion at this.

5) Start with the view that it CAN be done. Not that it cannot. How did Columbus cross the Atlantic? First of all, by **believing he could**. Ask: What if we look at this backwards? Can we flip this image? What is missing in the source that I can supply? What color can I intensify to add some zip? Stretch a shadow? Simplify and unify values? Add a figure for scale here? Crop off there?

6) Don’t ask what details you should **leave out**. Ask what details you must leave IN, and eliminate the rest.

7) **Think outside the box. Distort, elongate, flatten, reverse** warm and cool colors.

8) Decide in advance what **mood** and **color** scheme you are going to use, and hold yourself to that, replacing a color that doesn’t fit the scheme with one that does.

Are you **afraid** of taking risks? If so, why? **Analyze** it. Are you afraid of looking foolish? Making a mistake? Well, would you rather look timid or indecisive? It’s a choice. If it is disapproval you fear, **whose** disapproval is it? Are they qualified to disapprove? If not, politely shrug it off. Write down what it is you are afraid of, and then dismiss it: tear it up. Give yourself approval and permission to be what you want to be and paint what you want to paint.

**Invest in an expanded mind.** Mentally push your limits; read books that tax your comprehension. Go where you have not gone. Fly standby; I’ve done it to London and Guatemala. Travel if you can; armchair travel, if you can’t. Invite guests to your home from faraway places. Ask them to share their life stories. Go to the ballet or opera. Expose your eyes to great work. See the best shows. Read great novels. Read great art books. Underline or highlight the text in those books. Make notes in the margins. Make them YOURS. Take the classes you need to take. Do the homework that being a serious artist demands.

**While you paint, listen to music** that motivates, that loosens you up, inspires and liberates you. I find music without words is usually less distracting—used to paint abstracts to the Tijuana Brass. Whatever gets your juices flowing and is in sync with the mood you want to develop.

**Scientific knowledge of the human brain** has made incredible progress over the last decade. Given normal equipment, we have the capacity to expand our abilities far beyond where we are now. Putting it another way: old dogs CAN learn new tricks. So get bold. Go with intuition. If you feel you should try something a little different with your painting, do it. Create some visual tension. Don’t wait for approval, even your own. Dare!

Happy painting to one and all.

Margot

THE PASTEL SOCIETY OF THE WEST COAST

*pastels u.s.a.*  
24TH INTERNATIONAL OPEN EXHIBITION



**June 3 - July 9, 2010**

The Art Museum of Los Gatos  
4 Tait Avenue at W. Main Street  
Los Gatos, CA 95031  
408.354.2646

Another fantastic museum venue for **PASTELS USA**, at **The Art Museum of Los Gatos**, in an upscale area of the South Bay, on the San Francisco Peninsula. Museum Hours: Wednesday through Sunday, 12:00 to 4:00 PM [www.museumsoflosgatos.org](http://www.museumsoflosgatos.org)

## Juror of Awards:

Richard McKinley.

We were pleased to have 182 artists submit 477 images -- thoughtfully reviewed by jurors Duane Wakeham, Kim Lordier, and Dan Petersen. From those, 106 paintings by 74 artists were selected for this year's exhibit.

**Over \$10,000 in awards, including \$1500 Best of Show.**

*Pastels USA 2010 Accepted work by  
Willo Balfrey, Nancy MacDonald, and  
David Wills*

## Welcome to New Members

|                     |                     |
|---------------------|---------------------|
| Melanie Stimmell    | West Covina, CA     |
| Rae Smith           | Egg Harbor, N.J.    |
| Jacquelyn Boberg    | San Jose, CA        |
| Bernard Treanton    | Folsom, CA          |
| James Reynolds      | Sebastopol, CA      |
| Linda Dragonette    | Gainesville, GA     |
| Tracy Lang          | Laguna Niguel, CA   |
| Alexandra Sonneborn | Anchorage, AK       |
| Maria deCampos      | Pacifica, CA        |
| Lawanda Woolenman   | Lindsay, CA         |
| Debbie Harding      | Santa Rosa, CA      |
| Linda Mutti         | Santa Barbara, CA   |
| Diane Fechenbach    | Highlands Ranch, CO |
| Rowan Wolnick       | Monterey, CA        |
| Gary Huber          | Buffalo, WY         |
| Vianna Szabo        | Romeo, MI           |

Please remember 2010 Dues were DUE

## January 1, 2010.

Please send member inquiries, dues payments, etc to:

**Tegwin Matenaer,**  
**Membership Chair, PSWC**  
P.O. Box 2538, Redding, CA 96099  
Contact info: (530) 243-7694  
[tegsmail@tegwinart.com](mailto:tegsmail@tegwinart.com)

Make checks payable to **PSWC** or pay at our website online. Log on to [www.pswc.ws](http://www.pswc.ws) and pay via PayPal; you do not need an account to use PayPal. Follow instructions on the Membership Page.

**\$30 for Associate Membership**  
**\$35 for Signature/DP Membership**

## Membership Status

Maintaining Signature or DP status requires continued payment of dues no later than July 1 of each year. Restoring member status requires starting over, not just paying back dues: Attaining Signature status requires acceptance in three Pastels USA Open Exhibitions, or, alternatively, acceptance in two Pastels USA shows plus a place award in one PSWC (General) Membership Show.

With a national constituency, PSWC is the largest pastel society outside New York. --Please keep telling your friends about PSWC. Although our members are concentrated more on the West Coast, PSWC Members hail from all over the United States.

PSWC and PSWC-DP are signatures that matter. To win Distinguished Pastellist standing, artists must win three awards in Pastels USA in no more than a five-year period. We believe PSWC has the most rigorous standard for upper-level distinction in any major pastel society; once attained, you probably will not want to lose it. We have noticed that when an artist's pastel society membership status is listed in magazines, ads, etc, apart from PSA, PSWC is the most frequently mentioned.

Reasonable dues: PSWC membership is a bargain, and we are proud to provide our beautiful Pastels USA catalog free of charge to all who attend Pastels USA or whose work is accepted in the show.

**NOTE: Teg has moved out of the Sacramento area. She has continued to do Membership from a distance, but she needs to be replaced soon. We would be interested in hearing from people who are within driving range of Sacramento, computer-savvy and would enjoy working with our PSWC board.**

## RE [www.pswc.ws](http://www.pswc.ws).

Thank you to our web designer, **Diane Blakley**. She does a great job on keeping the site up to date. It is classy, informative and up to the minute.

Thank you to **Tina Moore**, who has been doing the newsletter layout She has enough to do as President and Awards Chair. Starting with this issue, **Maria Sylvester** will add the newsletter layout to her Publications Design duties.

Website views report: Do you wonder whether anyone reads this stuff? Well, yes, they do, and it is growing apace. Ahem: **Already in Fall 2009:** 491,402 requests were handled. **Versus 2008:** 163,233

## Dug Waggoner

We are proud to include Dug Waggoner as one of PSWC's Signature Members. We have "borrowed" Dug's comments about his work and his love of the pastel medium from his website, <http://dugwaggoner.com/works/68235>.

"A California native, born in Sacramento, I knew from an early age that drawing was a natural and comfortable home for me. Throughout my secondary schooling the opportunity to use my skills was never far away including being chosen as staff artist for the high school newspaper. Those artistic skills were sharpened and distilled in the intense atmosphere at the California College of Arts and Crafts in Oakland, CA. Graduating from there opened the door to a career in advertising design and illustration. Now, with many levels of drawing and painting skills in hand, I turn my eye to realizing my goal of producing fine art watercolor and pastel paintings.

"I enjoy working in watercolor and pastel mediums but find the drawing aspects and color brilliance of pastel a better voice for my work. Being comfortable with the two methods has evolved in

a way for me to use them in the same painting. That approach is now a two-stage process of rendering pastels over a watercolor base and the results are very effective.

"Pastel has always appealed to my need to draw and paint in the same motion. Building up layers of eye-mixing colors is very exhilarating. To my eye the colored particles of pure pigment shimmer and resonate far more than other painting methods.

"The speed that watercolor gives me has been a great teacher. Mistakes can be recovered if you let them. I love the transparent overlapping of tones and layers, the thrilling accidents between wet and dry, and the fragile dignity of the pigment never ceases to amaze me.

"The work continues in the evolution of this learning process, and bringing these two powerful mediums together has defined my personal approach in capturing an inspiration.

"2008 was a banner year for me. Having received awards for every juried show I have entered the internationally recognized Pastel Society of the West Coast recently



**Harvest Tea Time**  
Pastel on Paper · 18" x 24"



**Silent Shadows**  
Pastel on Paper · 11.5" x 16" · Private Collection

name me as one of their latest Signature Artists."

The painting *Silent Shadows* is, as Dug notes, part of a series "inspired by a snowshoe walk near Lake Tahoe, CA. The area had just received a fresh blanket of snow. The colder shadows falling across the soft bumps reflect the sky and warm the soul. This painting won a first award in the 2006 PSWC Membership Show."

## IAPS • <http://pastelinternational.com>

While visiting the IAPS web site, you'll see an opportunity to sign up for the IAPS newsletter. If you do so, you'll be first to get news of IAPS events, shows and opportunities.

We have been invited to have an exhibition at the **Butler Museum** again in 2010. Our annual Web Show will be a little later in 2010 so that you have time to have your best work

ready for all these wonderful exhibition opportunities. The above link will get you to the prospectus for various upcoming exhibits.

Don't forget that acceptance into an IAPS juried exhibition gives you a point towards **IAPS Master Circle** status. If your work wins an award, you'll receive a second point. The IAPS Master Circle gold medallions

will be presented at the 2011 Convention.

Congratulations to all the artists in the 2009 web show, and good luck to all who enter the 2010 Brea show!

Sincerely,

*Maggie*

MAGGIE PRICE, IAPS PRESIDENT

## PSWC Members make the World Go 'Round!!

**CONGRATULATIONS!** As always, many impressive accomplishments below – read on. The increasing national recognition and professional stature of our members is well demonstrated.

Please note: In future issues, only items submitted to our Member News editor Lisa Fricker, at [lisa@lisafricker.com](mailto:lisa@lisafricker.com), will be published. Too many volunteer hours are consumed otherwise. See other information at the end of this column. Thank you for your cooperation.

PSWC Laureate Pastellist **MARBO BARNARD**, Distinguished Pastelist **GERALD BOYD** and Associate Artist **DAVID KALBACH** were all juried into the current **20/20 Show** at the 20th Street Art Gallery in Sacramento. 62 juried artists created a body of work consisting of 25 small panels measuring 8" x 8", 20 of which will be displayed at one time. Each panel incorporates a cohesive theme or series in a medium chosen by the artist. The show opened April 7th and runs through May 29, 2010, and is open Wednesdays through Saturdays, noon till 5 p.m. On the 2nd Saturday of each month, the Gallery remains open for the late showing. The 20th Street Gallery is located at 911 20th Street, Sacramento, CA. Their web site is: [www.20art.net](http://www.20art.net).

**GERALD BOYD** won First Place in the 'Animal Division' of the 21st Annual Fine Arts Show in February at the Delicato Winery in Manteca, CA. Incidentally, he also had a painting rejected by the judge, but was later bought by one of the family owners of the winery. In

April, Gerald gave an oil portrait demonstration to an art group in San Leandro, CA and, in June, will be a judge for the 3rd Annual Plein Air Competition in Los Gatos, CA. This, of course, in addition to his duties as Chairman of Pastels USA and the shipping agent for the same so it's been a busy spring for Jerry.

**TERRI FORD** participated in the show *Absolute Abstraction* in January at Viewpoints Gallery in Los Altos. In February she again exhibited there, with new pastels along with oils by her father, Michael Dancer. During March and April she showed with northern California pastellists Gil Dellinger, Kim Lordier and Clark Mitchell at the Knowlton Gallery's "Things Remembered" in Lodi, CA.



*Sunset on the Seine*  
by Terri Ford

**LISA FRICKER** has been preparing for her solo show for the month of May at the Wine Studio in Upper Lake, CA. Public Encounters will unveil the first ten paintings in her new series, Encounters @ the Fair, augmented with a broader selection of figurative pastels and oils. Two receptions with live music will be held May 7 & 8, and pouring will be Obsidian Ridge wines.

Lisa is simultaneously nearing completion of four commissions for the Kennedy Space Center's Astronaut Hall of Fame: Guion Bluford, Kenneth Bowersox, Frank Culbertson, and Kathryn Thornton will be inducted this year on June 5.

**SUZI LONG** demonstrated her painting technique April 17th, for the Mendocino Art Association at the Ukiah United Methodist Church in Ukiah. Suzi lives in a restored water tower in the township of Mendocino, where she also has a studio and gallery. She has been published in *Art Calendar Magazine* and *International Artist*. Her murals have been featured in *Better Homes and Garden Magazine*, *Newsweek* and *Sunset Books*. One of her paintings is in *Artist's Magazine's* book "100 Ways to Paint a Landscape". Suzi is a Signature Member of the Pastel Society of the West Coast and Associate Member of the Pastel Society of America.

**SEPTEMBER MCGEE** has attained the level of Signature membership with the Connecticut Pastel Society. She has received lots of recognition of late: **Honorable Mention** in the *2010 Pastel Journal's Pastel 100*, **Award of Excellence** from the Degas Pastel Society members' show, the **Pastel Journal Award** at the Northwest Pastel Society's 23rd International, and an award from the PSNM 18th annual.

*(Member News continues on pg 6)*

She had work accepted for the following exhibitions: the IAPS 15th 2010, North Valley Art League, Connecticut Academy of Fine Arts 98th Annual, Connecticut Pastel Society 16th National, Richeson 75 Figure / Portrait 2009 and Richeson 75 International Pastels 2010, American Impressionist Society 10th National, Paint America Top 100, and the Audubon 67th Exhibition, NY 2009.

**MAGGIE PRICE** was the first artist to receive the new **Distinguished Pastellist** honor from the Pastel Society of New Mexico. She has been a Signature Member of that organization for many years. Price is also a Signature Member of the Pastel Society of America, and serves on the board of directors and as President of the International Association of Pastel Societies.

**MARGOT SCHULZKE** is the juror for the *Stockton Art League's 56th Annual National Exhibition at the Haggin Museum, Stockton, CA*, which opens September 2nd, 2010. Her pastel of

the West Carson River, "*On the Rocks*," is among those accepted in the 24th Annual Pastels USA, at the Los Gatos Museum, CA. Her next *Pastel Journal* column is about the creative processes of Leonardo da Vinci; look for it in the July/August issue. She does a presentation on design at the Sacramento Fine Arts Center, June 9, 7-9 pm. And likewise for the Stockton Art League, Thursday Sept. 9, 7-9 pm. She does a walk-through at the *PSWC Membership Exhibition, Placer Arts, 808 Lincoln Way, Auburn CA, September 4th, at 1 pm.*

**SALLY STRAND** was delighted to receive the "**Gold Award**" for one of two of her pastel paintings accepted into the International Association of Pastel Societies, 15th Annual Juried Competition. This same painting, *Bedside, AM*, also won an award at the Pastel Society of America exhibition, NY, 2008 and was selected to be exhibited at the Butler Institute of American Art, 2009 by special invitation of the museum curator. How the painting *Bedside, AM* was created is discussed in the article, "A New

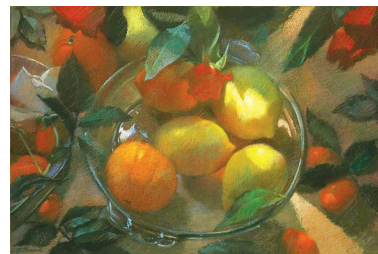
*Day, A New Vision*", *The Pastel Journal*, Dec. 2009. She was also featured in *American Artist Magazine* in February Feb. 2010, in the article, "*Sally Strand: Build Pastel Paintings Stroke by Stroke*".

*We'd like to blow your horn for you! Send your news—email only—to the Member News editor, Lisa Fricker. Only email submissions sent to [lisa@lisafriker.com](mailto:lisa@lisafriker.com) will be published.*

*Items should be in third person (he/she, not I), paragraph format as a news item - using standard 12 point type; no attachments or pdfs, etc. maximum 100 words. Items sent by regular mail will not be included; we are all volunteers. No postcards or flyers, please. Aug 1, 2010 is the deadline for next issue.*

*Please send workshop notices separately to the editor of the newsletter, at [newsletter@pswc.ws](mailto:newsletter@pswc.ws) To be published, the words "workshop calendar" should be on the subject line.*

*Thank you.*



**Citrus, Fallen Leaves & Kumquats**  
by Sally Strand

## Member Gallery Section Update • [http://pswc.ws/html/artist\\_gallery.html](http://pswc.ws/html/artist_gallery.html)

**We are very excited to introduce to our Members the New Member Gallery Website. Please log on and go to the Members Link page for full details.**

**We now offer the payment option "PayPal" for Membership and the Member's Gallery. Go to: [http://pswc.ws/html/artist\\_gallery.html](http://pswc.ws/html/artist_gallery.html)**

**Linda Roemisch, our website liaison chair reports:**

*For those who have not heard, we have a new and exciting way to get your art published on the web: it is our "Members Only Gallery" located within the Members Link page.*

*So far we have had eleven members who have sent in their images and their artist's statements. However, it has been reported that some other members have paid for their gallery--*

*but have not yet sent in their information, so please get your information to our web designer, Diane Blakley.*

*If you have not checked out the Member Gallery page, go to our website: [www.pswc.ws](http://www.pswc.ws) open the Members Links page, look for the red title GALLERY and click the artist's name.*

*Happy viewing!*

*Linda Roemisch*

"PASTELS ONLY" means the centuries-old medium of pastel, which by virtue of its 400 year-long history requires no adjective. That means no oil pastels accepted. However, where a sponsoring society has used it, we've replaced "soft" with the more descriptive "dry," as is the usage in Belgium and Canada. Due date for entries listed first, if applicable and if supplied.

You may also want to check out <http://www.artcalendar.com/home.asp> for other exhibit opportunities.

**MAY 3, 2010** -- MidAmerica Pastel Society. Exhibition dates: August 26 - September 25, 2010 Digital entries. Prospectus: <http://midamericapastel.org/> or send SASE to: MAPS, P.O. Box 8009, Shawnee Mission, KS 66208-0009

**MAY 14, 2010** -- Aquarius National-2010 Watercolor Exhibition at the Sangre de Cristo Arts and Conference Center, Pueblo, Co. Sponsored by Southern Colorado Watercolor Society. Juror Stephen Quiller. Cash awards. Members \$35.00/Non-members \$45.00 up to three entries. Prospectus: WWW.SCWS.US. Or send SASE to SCWS PO Box 3530, Pueblo Co. 81005. Questions: Toni Labenberg at [Labby3215@comcast.net](mailto:Labby3215@comcast.net).

**MAY 28, 2010** - Pastel Society of America. Exhibition dates: September 7-October 2, 2010 ( By digital or slide) Prospectus: [http://pastelsocietyofamerica.org/index\\_Page603.htm](http://pastelsocietyofamerica.org/index_Page603.htm) or send SASE to: 38th Annual Exhibition, Pastel Society of America, 15 Gramercy Park South, New York, NY 10003

**JULY 1, 2010** -- Pastel Society of the West Coast Semi-Annual Membership Exhibition, Auburn, at Placer Arts, 808 Lincoln Way. Great venue, lots of foot traffic. Download prospectus at [www.pswc.ws](http://www.pswc.ws) after June 1, 2010. Exhibit dates, August 12-October 2, 2010. More info, contact Bev Field: [bevfield@sbcglobal.net](mailto:bevfield@sbcglobal.net)

**JULY 7, 2010** -- Stockton Art League 56th Annual National Open Exhibition, September 2 - October 31, 2010. Haggin Museum, Stockton, CA. Digital on CD only. \$5,000 in awards. Prospectus, [www.hagginmuseum.org/exhibitions](http://www.hagginmuseum.org/exhibitions). Juror, Margot Schulzke.

**JULY 7, 2010** (Postmark by) -- Connecticut Pastel Society Renaissance in Pastel Show Exhibition dates: October 1-24, 2010 Mattatuck Museum, Waterbury, CT Submission: Digital only. Reception/awards: Sunday, October 10.

**JULY 9, 2010** -- Pastel Society of Colorado 6th Annual Mile High International 2010. Sept 3-25. Western Colorado Center for the Arts, Grand Junction. CO. Digital Only. Juror Sally Strand. \$5000 cash and merchandise awards. Two three day Strand workshops Sept 3-5 & 6-8. For prospectus and workshop info, contact Penny Creasy 2177 Meadows Ct., Grand Junction CO 81507, [pencreasy@bresnan.net](mailto:pencreasy@bresnan.net) or [www.pastelsocietyofcolorado.org](http://www.pastelsocietyofcolorado.org).

**JULY 20, 2010** -- Pastel Society of New Hampshire 2010 National Juried Exhibition will take place at the Discover Portsmouth Center, September 18th through October 30th in Portsmouth, NH. (digital) Prospectus, <http://www.pastelsocietynh.com/exhibitions.htm> or send SASE to: Sally Gordon Shea, 33 Pebble Beach Drive, Bedford, NH 03110

**JULY 31, 2010** --Sierra Pastel Society Exhibition dates: October 1 - October 23, 2010 (digital) Download prospectus or send SASE to: Sierra Pastel Society, P.O. Box 1936, Placerville CA 95667 August 10, 2010 (digital) Appalachian Pastel Society Exhibition dates: October 20, 2010 - November 13, 2010. Download prospectus

**SEPTEMBER 15, 2010** --IAPS Seventeenth Juried Exhibition, 2010 Web Show -- Jurors of selection: Lorenzo Chavez, Margaret Evans and Bill Hosner. Juror of Awards, Claudia Seymour. Entries are digital, must be on CD. <http://www.pastelinternational.com/COMPETITIONS/documents/webshow2010.pdf>

**The only way to find out if you are ready for big-time competitions is to enter.**

**POINTERS:** Find out who the jurors are; check their websites to see whether your work might be a fit in a show they select. Then, don't put all your money on one horse. Enter two or three shows, or more. Read the submission requirements carefully. Do exactly as instructed. Last (but definitely not least): Make sure your slides or CDs are top quality; poor images guarantee rejection.

# classes and workshops

*PSWC Signature artists and Distinguished Pastellists are invited to list classes and workshops in the PSWC newsletters. Please send exact wording to be used, in third person and single paragraph format, please. New listings should be sent in for each calendar year. Workshop fees will not be listed. The words "Workshop Calendar" must appear on the email subject line. Due to the volunteer hours involved, notices sent in display formats will not be posted.*

*When submitting a listing, instructor's PSWC Signature/Distinguished Pastellist status must be included; listings will not be posted otherwise. To save space and editing time, we do not note instructors' signature status, other than distinctions such as PSA Hall of Fame or PSWC Pastel Laureates™. Please send all workshop notices to [newsletter@pswc.ws](mailto:newsletter@pswc.ws).*

*If instructors would like to have full-color brochures for PSWC on hand to distribute to potential members at your workshops, please contact PSWC info (see online.)*

**DOUG DAWSON WORKSHOPS:** For more info and dates, email Doug [dougdawson8@cs.com](mailto:dougdawson8@cs.com). Or phone, 303/421-4584.

**CHRISTINE DEBROSKY** ([www.christinedebrosky.com](http://www.christinedebrosky.com)) will be teaching a week long workshop at the Sedona Arts Center, in Arizona, May 10-14, 2010, "Pastel- Landscape to Studio." This intensive session will incorporate plein air painting, as well as in depth studio sessions, with emphasis on sound technique and good design. Contact SAC, 888-954 4442, or [www.SedonaArtsCenter.com](http://www.SedonaArtsCenter.com)

**REIF ERICKSEN** - Check his artblog <http://reifsartblog.bloggers.com> for class listings.

**ALAN FLATTMANN**, PSA Hall of Fame Check Alan's website at [www.alanflattmann.com](http://www.alanflattmann.com). Or email, [art@alanflattmann.com](mailto:art@alanflattmann.com). Or call 985-845-4930.

**TERRI FORD** --Join Terri for 10 days, June 1-10, based at the beautiful Domaine du Haut Baran in the Lot Valley region of the South of France. You will go on painting trips to neighboring villages, markets, vineyards, farms and historic castles along the Lot River. Hosts Rosalie and William provide sumptuous meals al fresco, as well as translation and guidance throughout the region. Paint at your leisure, or receive plenty of one on one instruction...and french easels are provided!!! Non-painter companions welcome. Contact Terri at 408-286-3801 or email [tford@terrifordart.com](mailto:tford@terrifordart.com). [www.terrifordart.com](http://www.terrifordart.com)

**BOB GERBRACHT**, PSWC Pastel Laureate™. Workshops Pastels & Oils: Portrait & Figure.. Website: [bobgerbracht.com](http://bobgerbracht.com) Bob Gerbracht : call 510 741-8518 or [bgerbracht@sbcglobal.net](mailto:bgerbracht@sbcglobal.net)

**ALBERT HANDELL** - Albert is both PSA Hall of Fame and a PSWC Pastel Laureate™ Contact him at 505-983-8383, and ask for Virginia Stark, or write to P. O. Box 9070, Santa Fe, NM, 87504-9070, or go to the website at [www.alberthandell.com](http://www.alberthandell.com); or email [alberthandell@msn.com](mailto:alberthandell@msn.com). Please view

his website to read about their new Paint-A-Long Mentoring Program.

**LESLIE HARRISON** For complete workshop information, please visit her Web site at [www.harrison-keller.com](http://www.harrison-keller.com). You can now sign up online and pay by credit card. Or call 209-296-8889.

**BILL HOSNER** Visit website [williamhosner.com](http://williamhosner.com) for the most current schedule, and workshop registration forms. Watch for the Madrid trip later in 2010! Contact Kim at 231.633.3885 with any questions....

**Harbor Springs & Cross Village, Michigan** – May 19-21 & 22, 2010 – Join Bill for what could be his only US workshop this year: Portrait en Plein Air Mentoring Workshop and Student Work Exhibition. ...

**Artists' Spain & Amsterdam Museum Art Tour**; Oct 12-27, 2010. Leave your paint box at home! Bring your intellect and sketchbook along. Learn how to see and think before you create! Seek not to copy the masters but rather seek what they sought. Experience the great museums of Madrid, Barcelona, and Amsterdam with Master Pastelist, Bill Hosner. [www.WilliamHosner.com](http://www.WilliamHosner.com), 231-421-1933, or [workshop@williamhosner.com](mailto:workshop@williamhosner.com)

**COLLEEN HOWE** - Focus is on a strong value structure at the beginning of each painting. View examples of her work and check her calendar at [www.colleenhowe.com](http://www.colleenhowe.com).



Please contact Colleen with questions at 801-502-4588 or [ckhartist@aol.com](mailto:ckhartist@aol.com).

**RICHARD MCKINLEY**, at [www.mckinleystudio.com](http://www.mckinleystudio.com) for 2009-2010 workshops.

**CLARK MITCHELL** pastel workshops-- [cgmitchell.com](http://cgmitchell.com) 707.793.9131.

**MAGGIE PRICE** See a complete listing of 2010 workshops on her web site. Contact her at 505-294-7752, email [pcstudios@cableone.net](mailto:pcstudios@cableone.net), or register on-line at [www.MaggiePriceArt.com](http://www.MaggiePriceArt.com).

**MARGOT SCHULZKE**, PSWC Pastel Laureate™. Learn the "rules" of design -- so you can break them successfully. Class

sizes limited; all levels and media welcome.

**Ann Arbor, Michigan**, the city of trees, April 26-30, 2010, contact Debra, [idezamperla@gmail.com](mailto:idezamperla@gmail.com).

**Idyllic Lac du Flambeau, Wisc.** In fall color. Sept 19-24, 2010, at Dillman's Creative Arts, a stunningly beautiful and relaxing location with a huge lake that winds on for miles, free kayaks, etc. To say nothing of their lovely classroom! [www.dillmans.com](http://www.dillmans.com), 715/588-3143.

**Springfield, OR**, March 21-25, 2011, third year at the Emerald Art Center. Contact Germaine at [glhammon@aol.com](mailto:glhammon@aol.com).

**Monterey, CA**: spectacular California coast at Asilomar, Point Lobos and Garrapata State Park, Mar/April 2011, 5 days,

contact Maria Sylvester at [sylvester2666@sbcglobal.net](mailto:sylvester2666@sbcglobal.net) or 530/887-0733. Auburn classes: check website, [www.margotschulzke.com](http://www.margotschulzke.com) for details. Or contact [designinart@gmail.com](mailto:designinart@gmail.com).

**ANITA WOLFF CLASSES**, Fridays only by appointment; Camino, CA. [www.anitawolff.net](http://www.anitawolff.net); (530) 644-6814



**Girl with Straw Hat**  
by Anita Wolff

## miscellaneous. . .

### Scholarship Program

Each year the Pastel Society of the West Coast awards a \$500 scholarship to a high school graduate who is going on to major or minor in fine art in college. We had more applications in 2010 than ever before.

This is an annual event. If you know a senior in High School this fall who is studying art: PSWC offers a \$500 scholarship each year. Application deadline each year is March 31st. You can download application forms for 2011 from the PSWC website: [www.pswc.ws](http://www.pswc.ws), or contact chairperson Rosemary Boissonade or

President Tina Moore.

Recipient must be a high school junior or senior and must enroll as an art major or minor at an accredited college OR attend a recognized arts school, such as The Art Student League of New York, the Art Institute of Colorado (Denver) or San Francisco Art Institute, to receive the funds. Students anywhere in the country are eligible to apply. If you have a friend or relative who might qualify for next year's award, go the website and download a form to send them.

The 2010 winner will be announced at the Pastels USA Reception.

### Artistes de Studio

invites artists who paint in their studio to become a member of our online artists' network! Join other artists in discussions, learn painting tips, display your work, chat and more! It's a blast!

[www.studioartists.ning.com](http://www.studioartists.ning.com)

Jennifer Evenhus, PSA-MP, NPS-DP, PSWC, KA.

PRESIDENT; EXHIBITION CHAIR: Tina Moore, *President@pswc.ws; info@pswc.ws* 209-931-2529

VICE PRESIDENT, PASTELS USA CHAIR: Jerry Boyd, *jerry@geraldboyd.com*, 209-745-6535

RECORDING SECRETARY: **OPEN**

TREASURER: David Kalbach, *kalbachd@comcast.net* , 916/988-5551

NEWSLETTER EDITOR:, Margot Schulzke, *newsletter@pswc.ws* 530-878-7510

EXHIBIT COMMITTEE: Bev Field *bevfield@sbcglobal.net*, 916-655-3255

James Johnson, *jrjpmj@sbcglobal.net*, 916-488-2660

PUBLICATIONS DESIGNER: Maria Sylvester, *sylvester2666@sbcglobal.net*, 530-887-0733

MEMBERSHIP CHAIR: Tegwin Matenaer, *membership@pswc.ws* 530-243-7694,

P.O. Box 2538, Redding, CA 96099

WAYS AND MEANS: Linda Roemisch, *waysandmeans@pswc.ws*

PUBLIC RELATIONS: Ruth Hussey, *rlhussey@sbcglobal.net*,

MEMBER AT LARGE: Jim Tanovitz, Art Ellis Inc, 2508 J St. Sacramento, Ca. 916-448-1875

#### ADMINISTRATIVE STAFF

WEB DIRECTOR: Diane F. Blakley, *diane.blakley@sbcglobal.net*

SCHOLARSHIPS: Rosemary Boissonade, *scholarship@pswc.ws*, 916-771-4415

HISTORIAN: Gina Leyton, *ginaleyton@sacto.com*, 916-338-5487

GENERAL MEETING HOSTESS: Jane McKenzie

AREA CALLING COORDINATOR: Fran Bristow

#### REGIONAL REPRESENTATIVES

Dianne Wyatt, Sheridan Wy. 82801; 307-5627

Peggy Nichols, Los Angeles Ca 90048 213-852-7132

Patricia Boes, Long Island City, NY 11103

Peggy Tibbs, Fresno, Ca.

Nell D. Fischer, Pickerington, Ohio

Sandy Bonney, Brookings, Or (541) 469-1085

*Next Newsletter Deadline: August 1, 2010*



THE PASTEL SOCIETY OF THE WEST COAST  
P.O. Box 4518 • Stockton, Ca. 95204.