



PSWC NEWSLETTER

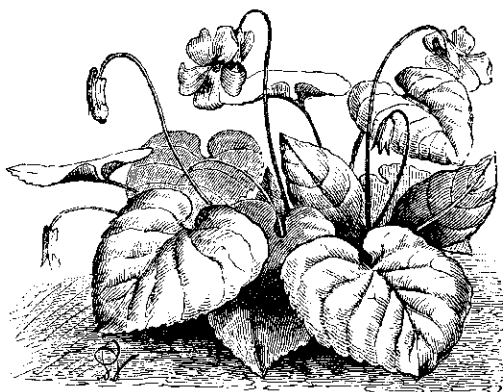
LETTER FROM THE PRESIDENT



That wonderful time of year has arrived, when California is at its best, bringing lots of sunshine and so far, not too much heat. Hopefully it will inspire all of us to paint some of the beautiful

things nature has to offer. It is also a very busy time for your board as we are doing our best to find exciting offerings for you, our members.

First of all as you know the **22nd Annual Pastels USA** is well under way. **Jerry Boyd**, our show chair, has done a great job organizing and coordinating this year's exhibit. We received almost 500 entries from across the United States including Hawaii. There were even two entries from our neighbors in Canada. Our three slide jurors spent the entire day making the very tough decisions on which pieces to include in this year's exhibit. In the end 99 paintings were chosen, and they will go on display at the Haggin Museum in Stockton, CA in May. I would personally like to congratulate those artists who were accepted into the exhibit. I also sympathize with those of you whose works were not accepted this year. I would encourage you to enter again next year and remember you are allowed to enter the same painting a second time if you wish. Please try to find time in your busy schedules to come to the exhibit not only to see the wonderful pastels but also the Haggin Museum, which has a fantastic collection of art.



Another reason to come to the exhibit reception on **May 31** is to recognize the contributions and accomplishments of **Marbo Barnard**, who

is being honored this year as our new **Pastel Laureate™**. Marbo is a lovely person and a lovely artist. She has done so much to promote the pastel medium and has given many years to make PSWC the great Society it is today. Since I have taken over the job of Exhibits Chair from her I can truly appreciate all that she has done year after year. I am honored to know her. Marbo joins the prestigious group of Pastel Laureates including **Daniel Greene, Albert Handell, Bob Gerbracht, and Margot Schulzke**.

It was a pleasure to see so many artists and friends of **Bob Gerbracht** at our meeting in Walnut Creek on March 29. Bob enthralled the group with his amazing pastel portrait demo, his wonderful sense of humor, and his fountain of knowledge which he so readily shares. The PSWC thanks Bob so much for agreeing to come and share his talent with our members and friends. If you would like to do something really nice for yourself you should check out and consider attending Bob's week long workshop in Asilomar in July. You can find out more details on his website.

..... Letter From President - continued on pg. 2 ▶

Pastel Society of the West Coast 2008 Membership Information

Associate Member: \$30

Signature or DP Member: \$35

Please remember maintaining signature status requires continued payment of dues each year.

Signature status requires acceptance in 3 Pastels USA Open Exhibitions. **Distinguished Pastellist** status requires 3 awards in 5 consecutive Pastels USA Open exhibits within a 5 year period.

Membership forms are available on the PSWC website: www.pswc.ws

☛ **Make checks payable to PSWC. Send to:**
Tegwin Matenaer
PSWC Membership Chair
P.O. Box 2538, Redding, CA 96099

..... Letter From President continued from page 1 ►

Our next event, which I know you will be interested in, is our **Membership Show**, which will be held at the Vacaville Museum in Vacaville, CA. This is another great venue that we have been fortunate to find. The paintings will hang there during the entire month of October. Now is the time to start getting those entries ready. A prospectus will be mailed to you in the near future.

And if you really want to plan ahead the **23rd Pastels USA** will be held at the Triton Museum in Santa Clara, CA in July 2009. If you have a suggestion for a venue for our 2010 exhibit, please let me or any board member know. We would love to have your input.

- Tina Moore,
PSWC President

MARBO BARNARD TO RECEIVE THE PASTEL LAUREATE™ AWARD

Marbo Barnard, PSWC-DP, PSA, KA, will be recognized May 31, 2008 (The reception is 2:00 - 4:00 pm, Haggin Museum, Stockton, CA) as the latest **PSWC Pastel Laureate™** award recipient at the **Pastels USA Reception for 2008**. Marbo is included in a number of major books on pastel, among them the several "*Best Of Pastel*" volumes, as well as Madlyn Woolwich's *The Art of Pastel Portraiture*, and Margot Schulzke's *A Painter's Guide to Design and Composition*, as well as Rockport Publishers *Floral Inspirations*. Marbo's work also has been featured in *The Pastel Journal*, *American Artist* and *The Artist's Magazine*.

Marbo Barnard was born in Japan and came to the United States in 1956. She is an accomplished artist and experienced in all mediums. Marbo is a full signature member with the Pastel Society of America, Knickerbocker Artists, New York and a Distinguished Pastelist in the Pastel Society of the West Coast.

Marbo has been PSWC President, Vice President, and its longterm Director of Exhibits, serving on the society's board for twenty effective, energetic years, from 1987 to 2007. Until recently, she taught pastel painting in Sacramento and conducted workshops in adjacent locations. She has won more than 100 awards in fine art competitions, including twice winning the PSWC Best of Show. She has competed in such major national and international open juried exhibitions as Knickerbocker Artists, New York, Pastel Society of America, New York, Pastel Society of the West Coast, California, Pastel Society of Oregon, Pastel Society of New Mexico, Pastel Society of Kansas and the American Artists Professional League, New York, winning honors in a number of national competitions, including the Pastel Journal 100. She joins previous Pastel Laureate™ honorees Albert Handell, Daniel Greene, Bob Gerbracht and Margot Schulzke in the PSWC Hall of Fame.

The honor is well deserved. ***Congratulations, Marbo!***

CALENDAR

May 31, 2008 -
2pm - 4pm Reception

June 22, 2008 -
Show Closes

June 28, 2008 -
Pick-Up, Pastels USA
10am - 1pm

Deadline for PSWC
Membership Show Entry:
Slides and/or digital CD:
August 25, 2008

Delivery of Accepted Work:
Sept. 26 - 27 from 1-4 p.m.

Shipped Work: Deadline to
handling agent is Sept. 20 - 26

Open to the public: Saturday,
October 4 - October 31, 2008

Reception: October 4, 2008

General Meeting: Saturday,
October 18 from 1 - 4 p.m.

Pick up Paintings: November 1
from 1 until 4:30 p.m.



Member News-PSWC Members make the World Go 'Round!!

Congratulations! As always, many impressive accomplishments below - read on. The increasing national recognition and professional stature of our members is well demonstrated.

Please note: ONLY email submissions will be published. (No attachments: they will not be opened.) Please send workshop notices separately to the editor "in-chief" of the newsletter, at schulzke@jps.net; don't combine those with awards and exhibitions. Thank you.

☛ **Mary Aslin** received a 5th place in the Still Life & Floral category of the Pastel 100 Competition from the *Pastel Journal*. Her painting and details about it appear in the April

..... PSWC Member News continued on page 3 ►

..... PSWC Member News continued from page 2 ►

issue. She won a First Place in the Landscape category and a Second Place for Still Life in the United Society of Pastel Artists' 2nd Annual Members Show, held at The Esther Wells Collection in Laguna Beach, CA in September - October. Last summer she won Best New Artist and Best Pastel Artist awards at Art-A-Fair in Laguna Beach. In addition she won the Dakota Art Award in the Northwest Pastel Society's 21st Open International Exhibition.

☛ **Jerry Boyd** won the Pastels USA 2008 University Art Award. He also recently received the First Place Award in Pastel at the Society of Western Artists 58th Annual Exhibition which will be held in the SF Art Academy Gallery, 688 Sutter Street, San Francisco between July 1 and August 2, 2008. In June he will be the Juror for the Art Exhibit at the San Joaquin County Fair in Stockton, and in August will join Dan Petersen (one of our slide jurors for Pastels USA) as one of the juror's for the Lodi Grape Festival Art Exhibit in Lodi, CA.

☛ **Dawn Emerson** has been awarded signature status by the American Academy of Equine Art. She serves on the AAEA board, and has been invited to be a juror for the September 2008 show. She will also be teaching a pastel workshop at the Academy in June. Dawn will be the featured artist in the upcoming May/June issue of *Wildlife Art Magazine*. For further information please visit www.dawnemerson.com.

☛ **Terri Ford** participated in two simultaneous exhibits this winter at the Triton Museum of Art in Santa Clara: A Brush with Nature, California Plein Air Painting; and the museum's Statewide Painting Competition. Terri is a winner of two Honorable Mention awards in the *Pastel Journal's* Pastel 100, appearing in the April issue.

☛ **Lisa Fricker**- May festivities will mark induction of the 2008 honorees into the Astronaut Hall of Fame. Lisa

..... PSWC Member News continued on page 5 ►

FEATURED ARTIST

Bob Gerbracht,

Pastel Laureate™ Bob Gerbracht has been a huge supporter of PSWC since it began in 1985. He was our first demonstrator in the fall of that year, and has continued to provide encouragement and inspiration ever since—MS.

Bob began studying art in junior high school in Erie, Pennsylvania. At the same time, one night a week, he attended a W.P.A. government sponsored class in portrait painting, and on Saturday mornings he attended a private painting class.

During World War II, he carried his oils and watercolors with him in combat - his brushes and paints fitted nicely in a German gas-mask canister he found. When the war was over, while waiting to be shipped home, he painted portraits of his Army buddies and was given an opportunity to study portrait and figure painting with German and American instructors in Bamberg.

He earned his B.F.A. in Painting from the Yale School of Fine Art. During his first year there, he taught an adult class in Painting at the New Haven YMCA. After leaving Yale, he earned his M.F.A. from the University of Southern California. He began teaching his private classes and workshops in portrait and figure drawing and painting in 1979 in San Jose. His workshops have since taken him all over the United States and Mexico. He has demonstrated portrait painting before dozens of Bay Area organizations including the Society of Western Artists, the San Francisco Academy of Art, and the Commonwealth Club of California. Also before the Pastel Society of the West Coast, the Pastel Society of Oregon, and the International Association of Pastel Societies.

His paintings have been shown in exhibitions in the United States, Israel, Austria, and China, winning many top awards and honors including the Lifetime Achievement Award from the Sonoma Plein Air Corporation. He is a member of the Society of Western Artists, an Advisor and Pastel Laureate of the Pastel Society of the West Coast, and a Master Pastelist of the Pastel Society of America. Magazines featuring his work and teaching are *Today's Art and Graphics*, *Profile* (the magazine of the former American Portrait Society), the *Art and Antique Collector*, and *US Art*, all of which are no longer published, and *American Artist*, *The Pastel Journal*, and *Pastel Artist international*. Books including his work are *The Best of Pastel*, *Best of Pastel 2*, *The Best of Oil Painting*, *The Best of Portrait Painting*, and in his own book of figures and landscapes, *People and Places*. He is included in *Who's Who in American Art*, *Who's Who in America*, *Who's Who in California*, *Who's Who in the West*, and *Who's Who in American Education*. Bob paints and teaches in his studio in San Francisco.

Bob was featured in the 2005 August issue of the *Artist's Magazine*, "A Matter of Perception."

Thanks to Bob's website, www.bobgerbracht.com, for this bio! And sincere thanks for all the great support you have provided to PSWC and its member-artists over the years.—MS ☛

EXHIBIT OPPORTUNITIES

“Pastels only” means the centuries-old medium of pastel, which by virtue of its 400 year-long history requires no adjective. That clearly means no oil pastels accepted. However, where a sponsoring society has used it, we’ve replaced “soft” with the more descriptive “dry,” as is the usage in Belgium and Canada.

Due date for slides listed first, if applicable and supplied:

- **PSWC Membership Show, Vacaville Museum, October 3-October 31, 2008. Deadline for Membership Show Entry: Slides and/or digital CD : August 25, 2008.** Delivery of Accepted Work: September 26 - 27 from 1-4 p.m. Open to the public October 4 until October 31, 2008. *Prospectus is coming to you shortly.*
- **July 1, 2008 42nd Mother Lode National Art Show, Aug. 10-24,** Prospectus, www.placervillearts.com or #10 SASE to PAA, PO Box 905, Placerville, CA., 95667. Juror Jerry Miora. Judge, Kathleen Dunphy. Awards approx. \$4,000.
- **July 1, 2008 Pastel Society of America 36th Annual Open, Natl Arts Club,** Sept. 2-20, Open to dry pastel only. Over \$20,000 in awards. Fee, \$25, 1 slide, \$35, 2 slides, \$45 3 slides. SASE (#10) to Elissa Prystauk, Exhib. Chair, PSA, 15 Gramercy Park S, New York, NY 10003. www.pastelsociety-ofamerica.org, 212/533-6931; pastelny@juno.com
- **July 3, 2008 (Postmark date) Connecticut Pastel Society 15th Annual Natl. Exhibition “Renaissance in Pastels”.** Oct 2-26, 2008. Dry pastels only. Over \$10,000 in awards. Prospectus, #10 SASE, Mally DeSomma, CPS, 37 Rutland St., Waterbury, CT 06708, or download www.ctpastelsociety.com
- **July 7, 2008 Florida, Ft. Walton Beach, 10th Biennial Nat. All-Pastel Juried Exhibition, Pastels 2008.** Sept 7-Oct. 9, 2008 OWC Galleries, Niceville, Fla., Anatoly Dverin, Juror. Dry pastels only. Up to 3 slides, Awards, \$7,000. Prospectus: SASE to PSNE, PO Box 5133, Ft Walton Beach, FL, 32549.
- **July 14, 2008 55th Juried Exhibition,** Haggin Museum, sponsored by Stockton Art League. Sept 14-Nov 9. Cash awards over \$5,000. Open to all US artists. No photography or computer art. Juror: Gil Dillinger. Prospectus, #10 SASE to Teresa Hickey, 1031 Elmwood Ave. Stockton CA 95204 or www.hagginmuseum.org. Inquiries, elmhickey@sbcglobal.net.
- **August 1, 2008 Exhibition of the Appalachian Pastel Society;** Juror: Margaret Dyer. Opening Reception October 3, 2008; Show runs to November 22, 2008, at the Gallery of the Arts Council of Henderson County, 538 N. Main Street, Hendersonville, NC, 28739. A prospectus will

be available on the APS website by May.

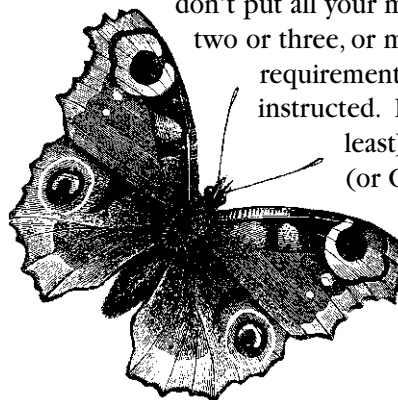
www.appalachian-pastel-society.org/; Deadline for CD entries is August 1st.

For more information contact Kay Gordon, (828) 649-3363 kgordon@main.nc.us

- **August 8, 2008. IAPS 12th Exhibition Web Show,** must be a member of IAPS, juror: Jimmy Wright, up to 5 slides. Check IAPS site for more information.
- **Aug 31, 2008 Pastel Society of the Southwest 27th Annual Juried Exhibition,** Nov. 2008. \$4000 in awards. Juror Kaye Franklin. Prospectus, #10 SASE to June Holloway, 7517 Vanessa Dr., Fort Worth, TX, 76112 or www.pssw.info
- **August 9, 2008 Degas Pastel Society 12th Biennial Natl Exh.** Oct. 2-Nov 16, Lauren Rodgers Museum of Art, Laurel, MS, Juror Terry Ludwig, \$5000 in awards. Dry pastels only. 1-3 slides, \$25 members, \$30 nonmembers. Prospectus, www.degaspastelsociety.org or send #10 SASE to Nancy Stutes, 44036 Vicki Lane, Hammond, LA 70403; 985/542-5132.
- **August 16, 2008 Pastel Soc of New Mexico 17th An. Natl. Pastel Painting Exh.** Nov 7-25, Expo New Mexico, Albuquerque. Jurors Bill Hosner, Ned Mueller and Bob Rohm. Awards approx. \$10,000. Max 3 digital entries, \$30 members, \$35 nonmembers. Prospectus, www.pastelsnm.org.
- **August 31, 2008 Pastel Society of the Southwest, 27th An. Natl. Juried Exh.** Nov. 2008. Over \$4000 in awards. Juror Kaye Franklin. Prospectus, #10 SASE to June Holloway, 7517 Vanessa Dr. Fort Worth, TX 76112 or pssw.info.

For those who are wondering whether the water is warm or cold: The only way to find out if you are ready for big-time competitions is to enter. Pointers: Find out who the jurors are; check their websites to see whether your work might be a fit in a show they select. Then,

don't put all your money on one horse. Enter two or three, or more. Read the submission requirements carefully. Do exactly as instructed. Last (but definitely not least): Make sure your slides (or CDs, now) are top quality; poor slides guarantee rejection. ☹



..... PSWC Member News continued from page 3 ▶

completed portraits for the Kennedy Space Center of Robert Cabana, John Blaha, Bryan O'Connor and Loren Shriver. During April she is participating in Salon International, sponsored by the International Museum of Contemporary Masters. Her paintings "Unplugged" and "Lexy" are on view through May 2 in San Antonio, TX. Info: www.greenhousegallery.com

☛ **Ellen Gust** published her first book, "Life Below The Clouds", which brings together some of her paintings with poetry. Throughout life, the creative process ebbs and flows. For Ellen, this has taken her on a journey filled with family, dealing with recurring cancer, and the struggle to find time for her art. For more information contact www.PublishAmerica.com or go to her web site www.eyeonature.com and click on artwork/book.

☛ **Albert Handell** will be honored with a Retrospective Exhibition at the Butler Institute of American Art, Youngstown, Ohio, September 9th through November 18th. A catalogue designed specifically for the exhibition is available at Albert's website, www.alberthandell.com, along with some examples of the images presented in the catalogue. The catalogue may be ordered directly from him, by sending a check to Albert Handell, PO Box 9070, Santa Fe, New Mexico, 87504, or by emailing or phoning in a credit card number and expiration date. This is a huge honor; congratulations to you, Albert.

☛ **Marsha Kilian**, along with Suzanne McClelland, opens the Bold Mark Gallery & Studio with a Grand Opening Celebration on Saturday, June 7th from 2-5 pm at 1200 S Street, Suite D, Sacramento, CA. 916-295-4047 Everyone is invited.

☛ **Suzi Marquess Long** was featured in the January 2008 issue of Art Calendar magazine. Suzi lives in a watertower in Mendocino and has a

WELCOME NEW MEMBERS!

Total Membership: 405

DP 22

PSA 23

Signature members 141

Associate members 263

- Kathleen Anderson, Benicia, CA
- Gladys Bacon, Veneta, OR
- Beth Brooks, Olympia, WA
- Lorenzo Chavez, Parker, CO
- Suzanne Chonette, Newport Beach, CA
- Kacy Dodson, Citrus Heights, CA
- Bridget Herbst, Marlboro, NY
- David Kalbach, Folsom, CA
- Dayle Keller, LaVerne, CA
- Darlene McCarthy, Pleasant Hill, CA
- Jean Myers, Newbury Park, CA
- Stephen Woolery, San Mateo CA
- Mary Stroeing, Bainbridge Island, WA
- Steven Hagerth, Redlands, CA

Congratulations to our new Distinguished Pastellists. Awesome!

- Sarah Blumenschein
- Tina Moore, our current PSWC President

Please note, the standard to win this honor is tighter than that for a PSA Master Pastellist. To receive this distinction the recipient must receive three awards in Pastels USA in five years or less. You can tell from the small number who have earned this award over 22 years the difficulty of achieving it.

Congratulations to our seven new PSWC Signature Members!

- Elaine Augustine
- Willo Balfrey
- Sandy Byers
- Ellen Dreibelbis
- Ralph Hendrix
- Cuong Nguyen
- Janet Patterson

This recognition signifies acceptance in three Pastels USA International Open Exhibitions. ☛

Important News From our Public Relations Chair, Lisa Rico

WATCH YOUR MAIL...for a membership survey!

The board of directors of your society is constantly planning for future exhibits and events while remaining mindful of the mission and objectives of the organization. From time to time we believe it's important to step back and reevaluate where we are, and where we're going.

There is no better way for us to accomplish this than to ask you, our members, your thoughts, opinions and suggestions.

In that spirit, **we have prepared a member survey.** We've made every effort to keep it simple, and thus painless. **Watch your mail in the coming weeks for the survey. When you receive it, please take a few moments to complete and return it as soon as possible.**

Directions are included in the survey. Thank you!! ☛



..... PSWC Member News continued on page 7 ▶

FROM YOUR EDITOR...

—Margot Schulzke, ©2007

First order of business is to report what an honor and challenge it was to jury the awards for **PSWC Pastels USA 2008**. My sincere congratulations to all award winners and to all who were included in the show. And particularly to **Diana DeSantis** for her superb painting which took Best of Show. If you did not take an award or get in this year, take comfort in the high level of the competition, and come back next time around with renewed commitment to excellence.

As there is no separation into subject groups or, obviously, into media categories, we started from the top, with Best of Show. There were several superb possibilities, all of which ended up getting top awards.

What place they were given in the final lineup was not an instant decision. The point of sharing this with you is both to compliment the high caliber of work represented in the show, but also to give artists hoping for a crack at Best of Show awards in any competition, some particulars that affect that final choice.

Attention to detail matters immensely. Not to include more of them, but to get those that are included right – for example, the treatment of hands; they must be stated convincingly. If you do figures or portraits, mastery of hands is critical. There were many simply outstanding portraits included in the show; hands got careful scrutiny in every award presented. As did convincing postures and proportions.

So did **backgrounds**. Distracting, inconsistent backgrounds take away from the quality of the work. As Robert Henri observed, there are “some backgrounds so finely executed that you take no notice of them.” But that does not imply they are to be neglected or treated as an afterthought. Think of them as providing context, air to breathe, or as a stage backdrop for a drama enacted in the middle or foreground: Foregrounds must be supported by their backgrounds, not upstaged by them. That is regardless of subject matter. Most of us have attended live theater productions where a simple, unadorned background either added to or detracted from the action on the apron of the stage. What you choose to do with that background is critical.

Another must is to **chose a mode of expression** and stick with it. Consistency of statement gives unity and power; the painting must come across as painted by one artist, one who is also confident in design and certain in the application of pastel.

And for this juror, **freshness** counts heavily. I tend to walk

right past paintings that are overworked; they simply do not command this juror's attention. They appear uncertain and confused, even tired. Many other jurors would put the same priority on freshness—of technique, of concept, of whatever. Put the strokes down and leave them there; severely limit the use of blending. If you decide strokes are wrong, blow them away with canned air or brush them out with a stiff bristle brush; never attempt to paper over errors.

In the same vein, I should also comment on the 2008 Northwest Pastel Society Exhibition, which I had the honor of selecting in the same week I juried awards for PSWC. If you are within driving range of either exhibition, both are must-sees. Lots of freedom of expression, distinctive approaches in this show. The Northwest Pastel Society show is opening in July in Gig Harbor, Washington; check the NWPS website for address, specific dates and times.

Every juror sees with different eyes, but winning awards is not just a “crap shoot.” It does not just happen. Get specific about what you need to do, in order to win more and higher awards. There are common threads most jurors look for, and as the quality of your work goes up, so will the number and importance of the awards you win. No, you won't win every time, because jurors do not see it all the same way.

And all jurors are not equal. Select the shows you enter. If the juror does portraiture exclusively, he/she may not have an eye for your landscapes. Or if you paint avant garde work, you may not belong in a traditional show. And vice versa. Take a look at who the juror is, and check out his or her website to see if their work suggests a favorable disposition to yours.

Meanwhile, workshops are a great place to look for inspiration and direction, in an immersion atmosphere where it has more of a chance to stick to your artistic psyche. Reading good art books – thoroughly, not just looking at the pictures and captions – is a huge step in the right direction. Visiting the best shows (as recommended above) is also an urgent priority. There is no substitute for seeing fine work with your own eyes. Now, as Dr. Laura would say, go do the right thing. ...Artistically speaking, of course. 🌻





**General Meeting
Saturday, October 18
from 1 until 4 p.m.**

**Pastel Portrait Demo by
Bob Gerbracht**

**Saturday, March 29, 2008
Walnut Creek. Thanks to
Priscilla Warddrip for her report.**

Bob primarily uses Kitty Wallis paper that he tones with a wash. For his por-

traits he starts out with the drawing of the angles of his models head and the quick application of strong colors. No details in the features etc. He makes the space where the eyes will be first. (after drawing the head outline). This method allows a degree of contrast as a guide in the beginning, which will help you to get the tone of the complexion. The initial application of color on the face is very rich. Then he goes back in and lightens with future shades. He uses a black charcoal pencil exclusive-

ly, to great effect, to define the features. The progression of his application creates a portrait of unforgettable luminosity in it use of rich shadows and color. The demonstration was very well attended. No one would miss this voluntarily!

*Thank you Bob,
- Priscilla 🐼*

..... PSWC Member News - cont'd from page 5 ▶

pastel gallery on the ground floor. She also won a Merit Award in a recent members' show at the Mendocino Art Center. Please drop in to see her at The World of Suzi Long Gallery in Mendocino. www.suzilong.com or suzilongart@yahoo.com

☛ **Kim Fancher Lordier** was honored with a one woman show, LIGHT AND THE LANDSCAPE: Images of the Southern California Coast, at the Debra Huse Gallery on Balboa Island in Newport Beach, CA., April 4-25, 2008. The reception was held Friday, April 4, from 5-7pm.

☛ **Deborah Matlack** was given an Award of Achievement at the 2007 Avartfest, Triton Museum, and was a finalist for their Purchase Prize; was accepted into PSA's Exhibition in New York City and the Pastel Society of New Mexico's 16th Annual; won First Place in Pastel at the Society of Western Artists' 57th Annual; was accepted into Northwest Pastel Society's International; won a Third for one of two portraits at the Society of Western Artists' John Muir Show; won a Third in Portrait/Figure at the Los Gatos Annual. In 2008, her pastel "Lucy" was included in the Triton Museum of Art's Painting Exhibition. [Congratulations on an impressive string of awards, Deborah.]

☛ **Clark Mitchell** - This past October in Sedona, Arizona, Clark's pastel,

..... PSWC Member News continued on page 8 ▶

PSWC Member Websites

Over 50 PSWC member's websites are online at www.pswc.ws

Recent web updates:

▶ **Classes & Workshops** *The workshop listings published in this Newsletter are available on our website with E-mail & web links conveniently included!*

Newly listed websites:

- ▶ Lynn Freed, PSWC - www.wildandfreed.com
- ▶ Ralphie Hendrix, PSWC - www.rhendrixart.com
- ▶ Claire Schroeven Verbiest, PSWC - www.claireverbiest.com
- ▶ Candace J. Vlcek, PSWC, - www.candacevlcek.com
- ▶ Pat Aragon - www.patstoddardaragon.artspan.com
- ▶ Barbara Benedetti Newton - www.barbaranewton.net
- ▶ Lorenzo Chavez - www.lorenzochavez.com
- ▶ Jim Johnson - www.jrjart.com
- ▶ Tegwin Matenaer - www.tegwinart.com
- ▶ Ranjani Mohana - www.ranjanimohana.com
- ▶ Christina Rex - www.christinarex.com
- ▶ Helen Turner - www.helenturner.com

☛ **Are you a PSWC member with a website displaying your artwork?**
If you would like a link from the PSWC website to your website, please e-mail your request with your website address with your PSWC signature or membership status to mailbox@debraturner.com. Signature status is not required.
Thanks for contributing!

-Debra Turner, PSWC Web Director

Scholarship Program

Each year the Pastel Society of the West Coast awards a **\$500 scholarship** to a high school graduate who is going on to major or minor in fine art in college. We have had more applications this year than ever before. The **2007 Winner was Holly Kimball.**

This is an annual event. If you know a senior in High School this fall who is studying art: **PSWC offers a \$500 scholarship each year.** Application **deadline each year is March 31st.** You can download application forms for 2009 from the PSWC website: www.pswc.ws, or contact chairperson Rosemary Boissonade or President Tina Moore.

Recipient must be a high school junior or senior and must enroll as an art major or minor at an accredited college OR attend a recognized arts school, such as The Art Student League of New York, the Art Institute of Colorado (Denver) or San Francisco Art Institute, to receive the funds. Students anywhere in the country are eligible to apply. If you have a friend or relative who might qualify for next year's award, go the website and download a form to send them.

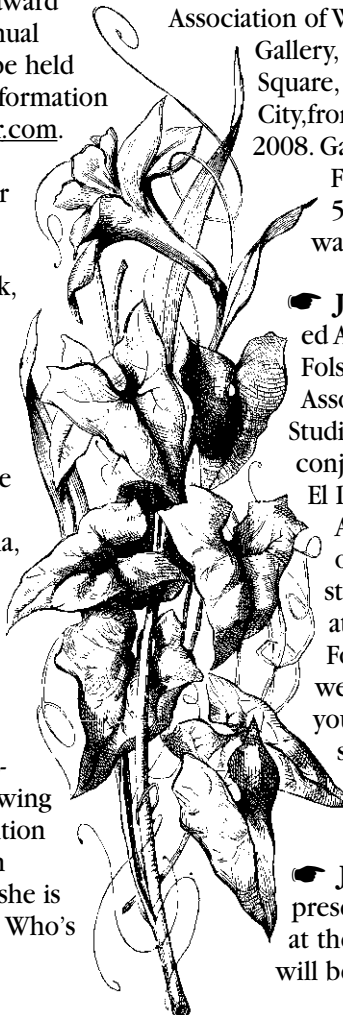


The 2008 winner will be announced at the Pastels USA reception. 🐞

.....PSWC Member News continued from page 7 ▶

"Icons", received the poster award for the upcoming Fourth Annual Sedona Plein Air Festival, to be held October 19 - 26, 2008. For information go to, www.sedonaartscenter.com. Clark will teach a four day plein air workshop right after the event.

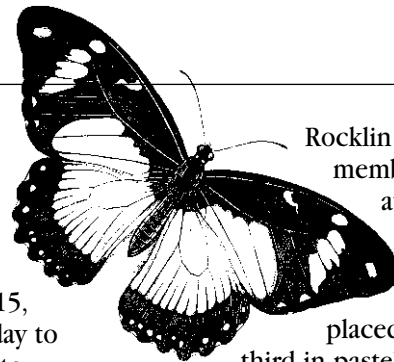
🐞 **Margot Schulzke's** book, *The Painter's Guide to Design and Composition*, continues to sell extremely well; some 15,000 copies were sold by year's end. In 2008, she is juror for both the Northwest Pastel Society National Exhibition in Tacoma, WA, and the PSWC 22nd Annual International Open, the latter to be held at the Haggin Museum in Stockton, CA. Her latest *Pastel Journal* "Viewpoints" column, The Great Divide, (June 2008) discusses the urgent role of drawing in creating fine work. In addition to her long-standing listing in Who's Who in American Art, she is listed in both 2008 and 2009 Who's Who in America.



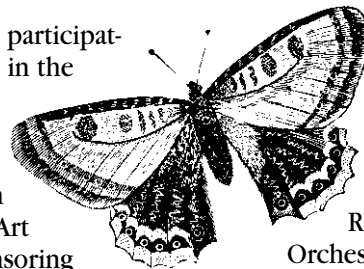
🐞 **Eileen Serwer** is having a solo show at The National Association of Women Artists Gallery, at 80 Union Square, New York City, from April 8 to May 15, 2008. Gallery hours: Monday to Friday from 11AM to 5PM. Artist's reception was April 10 from 5-7 PM.

🐞 **Joan Sexton** participated April 26 & 27 in the Folsom Art Assoc. Open Studio Tour. In conjunction with El Dorado Hills Art Assoc. is sponsoring our first annual open studio tour. Her studio is at 1211 Sutter St., Folsom. Although this weekend show is past, you can check Joan's website for information about future doings. www.jsextonart.com.

🐞 **Joyce Williams** is presently showing her work at the Domes in Auburn and will be exhibiting at the



Rocklin Fine Arts membership show at the Rocklin Community Center in May. She placed second and third in pastel category at the annual Snowflake show in Rocklin, CA.



🐞 **Patti Christensen Woodard** is presenting a solo show, "Intimate Rehearsals of the Reno Philharmonic Orchestra" scheduled April 14 through May 23, 2008 at the McKinley Art Center in Reno, NV. The exhibit will consist of over fifteen paintings of the orchestra members, their instruments, and Maestro Barry Jekowsky. 🐞

Classes and Workshops



PSWC Signature artists and Distinguished Pastellists are invited to list classes and workshops in the PSWC newsletters. Please send

exact wording to be used, in third person and single paragraph format, please. New listings should be sent in for each calendar year. Workshop fees will not be listed. When submitting a listing, **instructor's PSWC Signature/ Distinguished Pastellist status must be included; listings will not be posted otherwise.** To save space and editing time, we do not note instructors' signature status, other than distinctions such as PSA Hall of Fame or PSWC Pastel Laureates™.

If instructors would like to have the full-color brochures for PSWC on hand to distribute to potential members at your workshops, please contact PSWC.

☛ **Doug Dawson** Workshops: July, Wiscasset and Kennebunkport, ME, Santa Fe, NM; September, Campobello Island, Maine/Canada, Rochester, NY, Telluride CO, November, Hilton Head Isl.SC. For more info and dates, email Doug dougdawson8@cs.com. Or phone, 303/421-4584.

☛ **Christine Debrosky** Contact for schedule. (845) 679-2388, website: www.woodstockschoolofart.org, or www.pastelinternational.com.

☛ **Reif Ericksen** Check <http://reif-sartblog.bloggers.com> for class listings.

☛ **Alan Flattmann**, PSA Hall of Fame Website: www.alanflattmann.com. Or email, art@alanflattmann.com. Or call 985-845-4930. June 9-13 Shreveport, LA; June 26-28, Grand Rapids, MI; Sept.20-30 Lot Valley, France, contact Bob Strohsahl, 513/541-8000.

☛ **Terri Ford** Workshops 2008 workshops, California Bay Area; June 6 & 7 and September 5 & 6. Terri also offers individual instruction by appointment. (408) 286-3801, E-mail: tford@terrifordart.com; Web:www.terrifordart.com.

☛ **Bob Gerbracht** PSWC Pastel Laureate™. Workshop schedule: Portrait and figure painting: (510) 741-8518, website: www.bobgerbracht.com.

☛ **Albert Handell and Anita Louise West**—Albert is both PSA Hall of Fame and PSWC Pastel Laureate™ Contact them at 505-983-8383, and ask for Virginia Stark, or write to P. O. Box 9070, Santa Fe, NM, 87504-9070, or go to www.alberthandell.com; or email alberthandell@msn.com. Please view his website to read about their new Paint-A-Long Mentoring Program.

☛ **Colleen Howe**. Focus is on a strong value structure at the beginning of each painting. View examples of her work and check her calendar at www.colleenhowe.com

☛ **Bill Hosner** Workshop/ Demonstration Schedule 2008: June 23 - 27, 2008, Atlanta, GA, Southeastern Pastel Soc., 770/926-3623, September, Sutton's Bay, MI, 231/881-2895

☛ **Richard McKinley**, 2008 workshops at www.mckinleystudio.com.

☛ **Clark Mitchell**—Workshops: Sonoma County, CA, Indoors: July 18,19, 20 and November 14, 15, 16. Outdoors: October 3, 4, 5; Info: cgmitchell.com 707.793.9131; Sedona Arizona, Plein Air October 28 - 31 Sedona Arts Center 928.282.3809 sedonaartscenter.com

☛ **Maggie Price** All workshops are five days unless otherwise noted. JULY 14-18, Puyallup, Washington; JULY 21-25, Portland, Oregon; JULY 28-AUG. 1, Medford, Oregon, AUG 25-29, Boulder, Colorado; SEPT 15-19, New York City, New York, sponsored by Pastel Society of America. See www.pastelsociety-ofamerica.org. OCT 7-14, Santorini, Greece; It's an artist's dream; see www.ToscanaAmericana.com. OCT 18-27, Júzcar, Spain; Fall in the Andalusian mountains is wonderful and the painting opportunities are plentiful. May 24-28, 2008, Pollock Pines, California. Maggie Price was the co-founder and editor of *The Pastel Journal* magazine, and is the author of *Painting in Pastels: Easy Techniques to Master the Medium* (North Light, 2007). Complete listing of 2008 workshops on her web site. Contact her at 505-294-7752, email pcstudios@cablone.net, or register online at www.MaggiePriceArt.com.

☛ **Margot Schulzke**, PSWC Pastel Laureate™. Focus on design and technique, lots of one-on-one; all levels. July 16 - 19, Gig Harbor, WA 4 days; filled as of May 1, to be put on a waiting list, email bethbrooksart@comcast.net. Sept. 13 - 20, 2008 Puy-l'Eveque, France: Seven days in foothills of the beautiful Pyrenees, with painting trips to several fascinating medieval villages. Haut Baran, see www.hautbaran.com. Airport and workshop transportation provided. A set of Great American Margot Schulzke pastels awaits attendees on arrival. Sponsored by Great American Artworks. Contact: pastel-guy@aol.com or schulzke@jps.net. Oct 2008, Sacramento Fine Arts Center, 3 days. Auburn Classes: Starts again September. Check website, www.margotschulzke.com for more info. or schulzke@jps.net /530-878-7510. April 27-May 1, 2009, return visit to Eugene's Emerald Art Center, OR, five days. June 2009, scenic Pollock Pines, CA, at luxurious Penny Soto Artists Retreat, 5 days;

..... Classes & Workshops cont'd on page 10 ►

October, 2009, a return to pristine, High Sierra Hope Valley, CA; 5 days. Specific dates TBA, watch website www.margotschulzke.com.

☛ **Duane Wakeham**, PSA Hall of Fame, painting workshop at Haut Baran in Southern France, October 1-12, 2008. View photos of Haut Baran at www.hautbaran.com. For workshop information go to www.webster-world.com or write to WEBSTER'S WORLD, P.O. Box 2057, Falls Church, VA 22042. Or email dwakeham@astound.net.

☛ **Anita Wolff** Classes 2008 workshops., Fridays only by appointment; Camino, CA. www.anitawolff.net; (530) 644-6814 ☛



PASTELS USA 2008

Pastels USA International Open Exhibition this year is more international than ever before in its history, with entries shipped from Canada, France and Germany, plus sixteen different states. The show hangs as we write, at the **Haggin Museum**, Stockton, CA, a respected venue with a major permanent collection of fine art, including an impressive array of works by such noted 19th-century painters as Albert Bierstadt, Rosa Bonheur, William-Adolphe Bouguereau, Paul Gauguin, and Pierre Auguste Renoir, as well as other noted American and European artists of that era, such as Childe Hassam, William Bradford, Jasper Cropsey, Thomas Moran and Thomas Hill.

Total artists submitting were 191, with 488 slides entered. Our jurors of selection, **Marbo Barnard**, **Dan Petersen** and **Gunnar Anderson**, accepted 99 paintings from 78 artists. Awards were in excess of \$10,000, with some thirty winners selected by this year's juror of awards, **Margot Schulzke**.

This year's Pastel Laureate™ Award winner, Marbo Barnard, PSWC-DP and PSA (see separate article in this issue), will be honored at the May 31st opening reception at the Haggin; 2-4 pm.

As your newsletter editor, as well as juror of awards, I was pleased and surprised to see a number of names I know on the list of award winners. As a juror, you sign off on such a list without seeing any names, just their competition numbers. Of course, there are a few well-knowns whose work I knew at once by the style, such as **Bill James**, **Clark Mitchell** and **Duane Wakeham**, each of whom appear in my *Design and Composition* book – but many of the names below were a pleasant surprise. Congratulations to every one of you.

The list starts with **Best of Show...**

Award Winners and their winning works...

- Diana De Santis - Mercedes
- Ann McMillan - Cottonwoods
- Cuong Nguyen - Early Morning Light
- Al Zerries - Athena Today
- Andrew McDermott - Westside
- Duane Wakeham - Elkhorn Slough
- Richard Lundgren - Snow Trails
- Vianna Szabo - Complementary Anna
- Bill James - The 27th Virginia
- September McGee - Streets of New York-Red Umbrella III
- Dug Waggoner - Harvest Tea Time
- Clark Mitchell - High Above Telluride
- Ellen Dreibelbis - Duet
- Matt Lister - Corner of the Barn
- David Garrison - St. Germain Des Pres
- Betsy Kellum - Powhatan Clay Mfg. Co.
- Liz Kenyon - Take Five
- Rae Smith - On Goldfish Pond #74
- Claire Schroeven Verbiest - Tourtour
- Tina Moore - Lady Hawk
- Georgia Herrick - Remnants II
- Kathy McDonnell - Zoar Valley
- Gary Blackwell - Friends
- Bev Field - Just a Little Color
- Dongfeng Li - The Girl with Rose
- Gerald Boyd - The Parasol
- Janis Krendick - Coastal Area
- Ralphie Hendrix - Fog and Cypress
- Ellen Dreibelbis - Duet
- Lisa Fricker - Deal With It
- Sarah Blumenschein - Porcelain Poppy, Pink Ranunculus
- Mike Barret Kolasinski - A Boulder Approach ☛

Membership Show, Vacaville Museum, October 3 - 31, 2008

For the PSWC Membership Show 2008, The Vacaville Museum, Vacaville, California has been selected as the venue. If you have not had the pleasure of seeing this unique building and its surroundings, you are in for a treat. **The Prospectus will be arriving in your mail box soon.** The show will hang October 3 through October 31, 2008. **The Museum is open Wednesday through Sunday, 1 until 4:30 p.m.**

Entry Deadline: Slides and/or digital CD: August 25, 2008. Delivery of Accepted Work: Sept. 26 - 27 from 1 - 4 p.m. Shipped Work: Deadline to handling agent is Sept. 20-26. Open to the public: Oct. 4 - 31, 2008. Reception: Oct. 4, 2008. Pick up paintings: Nov. 1, 1 - 4:30 p.m.

This is a juried show. Entry is limited to Members in good standing of the Pastel Society of the West Coast. There are specific awards that are set aside and may only be won by Associate Members. All of the other awards may be won by any status of membership including the Associate members. Entry is made from the Prospectus and must include a slide of each painting you are presenting. You may enter one, two, or three paintings per the set fee stated in your prospectus.

From Membership Show Chair **Bev Field**: "If you have been hesitant about entering your work in a juried competition, think about the possibilities. When and if your work is selected, that fuzzy warm feeling is telling you "it's all right". Rejoice and enjoy. If your work is not selected, take the time to see the show and really study the paintings, Critique the work hung as well as your own as you look for color, design or compositional differences. Thinking, next time I will." 🐼

Membership Information

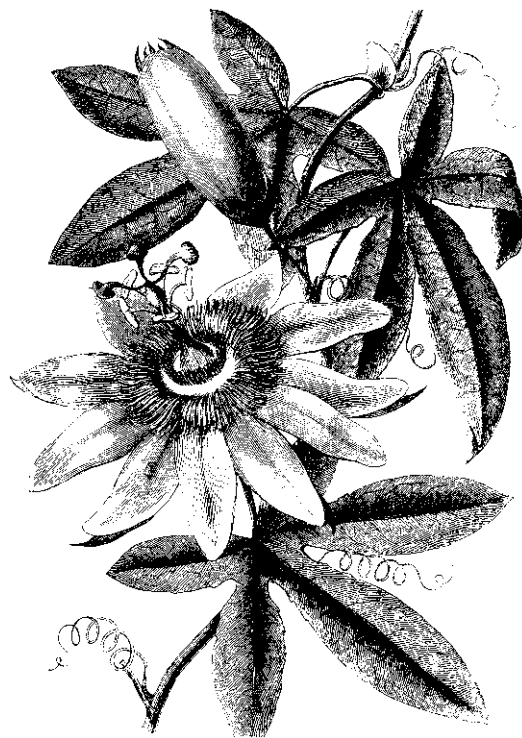
We would like to thank **Carol Ross** for her extensive and dedicated service as our membership chair. She has been thorough and absolutely dedicated to serving in that role, and all of us are grateful to her for the superb job she has done. However, the time came when she needed to step down. We appreciate her hanging in there until finding just the right person to fill her shoes—**Tegwin Matenaer**.

Tegwin is joining the board of the PSWC as Membership Chair. She is an experienced artist, photographer and educator with a degree from California State University, Fresno, CA, who has also studied at University of California, Davis, California State University, Chico and Atlanta Art Institute. She has studied under **Richard McKinley** and **Albert Handell**, taught art in California public middle and high schools, Shasta Community College outreach art program, and most recently for Redding School of the ARTS, a visual and performing arts charter school, Redding, CA and continues teaching privately. She has worked in pencil, pastel, oil and photography, receiving many awards, exhibits and reviews. Currently the allure of pastels and oil painting directs her passion. Tegwin's sensitive observations and love of life are evident in her work. Go to her website at www.tegwinart.com to learn more about Teg.

So, folks, from this point forward, please send member inquiries, dues payments, etc to:

Tegwin Matenaer,
Membership Chair, PSWC
P.O. Box 2538, Redding, CA
96099
Contact info: (530) 243-7694
tegsmail@tegwinart.com

Make checks payable to PSWC:
\$30 for Associate Membership
\$35 for Signature/DP
Membership



We'd like to blow your horn for you!

Send your news—**email only**—to the Member News editor, Lisa Fricker, at fricker-studio@mindspring.com. Items should be in third person (he/she, not I), paragraph format as a news item - **using standard 12 point type; no attachments**, maximum 100 words. **Items sent by regular mail will not be included**; we regret that, but it requires too much retyping time: we are all volunteers. Everyone now has email, or access to it—so no postcards or flyers, please and no illustrated email flyers. Thank you.
September 1 is the deadline for next issue.



P.O. Box 4518,
Stockton, Ca. 95204

Non-Profit
Organization
U.S. Postage
PAID
Permit 150
Auburn, CA

Pastel Society of the West Coast www.pswc.ws

Spring/Summer 2008

PASTEL SOCIETY OF THE WEST COAST BOARD

**PPRESIDENT;
EXHIBITION CHAIR:**
Tina Moore,
mooregrafix@comcast.net,
209-931-2529

**VICE PRESIDENT,
PASTELS USA CHAIR:**
Jerry Boyd,
jerry@geraldboyd.com,
209-745-6535

RECORDING SEC. Open

TREASURER:
Priscilla Warddrip,
art_future@hotmail.com,
916-652-0304

NEWSLETTER EDITOR ,
Margot Schulzke,
schulzke@jps.net,
530-878-7510

EXHIBIT COMMITTEE:
Bev Field
bevfield@sbcglobal.net,
916-655-3255

PUBLICATIONS DESIGNER:
Maria Sylvester,
Sylvester2666@sbcglobal.net,
530-887-0733

MEMBERSHIP CHAIR:
Tegwin Matenaer,
tegsmail@tegwinart.com
PO Box 992538, Redding
96099-2538. 530-243-7694

WAYS AND MEANS:
Linda Roemisch,
artandsoul@hughes.net,
530-265-9213

PUBLIC RELATIONS:
Lisa Rico,
Lisa-rico@sbcglobal.net,
707-446-1754

MEMBER AT LARGE:
Jim Tanovitz, Art Ellis Inc,
2508 J St. Sacramento, Ca.
916-448-1875

ADMINISTRATIVE STAFF

WEB DIRECTOR
Debra Turner,
mailbox@debraturner.com,
707/447-3960

SCHOLARSHIPS
Rosemary Boissonade,
boisson@earthlink.net,
916-771-4415

RECEPTIONS: Open

IAPS LIAISON
Linda L. Oslin,
loslin1@mail.csuchico.edu,
530-872-0854

HISTORIAN
Gina Leyton,
ginaleyton@sacto.com,
916-338-5487

OUTREACH
Kathleen Scaglione,
akscag@usamedia.tv,
530-268-1184

GENERAL MTG. HOSTESS
Jane McKenzie

AREA CALLING COORD.
Fran Bristow

REGIONAL REPRESENTATIVES

Dianne Wyatt,
Sheridan Wy. 82801
307-5627

Peggy Nichols,
Los Angeles Ca 90048
213-852-7132

Patricia Boes,
Long Island City, NY 11103

Peggy Tibbs, Fresno, Ca.

Nell D. Fischer,
Pickerington, Ohio

Sandy Bonney
Brookings, Or
(541) 469-1085

ADMINISTRATIVE STAFF

REGIONAL REPRESENTATIVES

Dianne Wyatt,
410 Thurmont,
Sheridan Wy. 82801
307-5627

Cynthia Hamilton,
216 Yarborough Ln.
Redwood City, Ca 94061

Peggy Nichols,
P.O. Box 480178,
Los Angeles Ca 90048
213-852-7132

Patricia Boes,
Long Island, NY.