



# PSWC NEWSLETTER

Pastel Society of the West Coast

Spring/Summer 2007

## LETTER FROM THE PRESIDENT



These past two years have been busy but extremely rewarding. I will be stepping down as of June 1st as president and will be passing the torch into the very capable hands of **Tina Moore**. Tina is

an exceptional artist and does a great deal for the Society. We are fortunate to have her as a representative for the Society. I will continue as treasurer.

**Carol Ross** was the perfect person for the membership chair that she has been doing for two years. Carol has handled our members in a thorough and thoughtful manner. Although she is resigning from her membership chair, she will host PSWC receptions starting when Lucinda Johnson leaves that duty in June. Carol will continue to graciously offer her home for our board meetings. In the past we have had to rent a meeting place.

Our board is in flux. After ten years on the board, Joan Sexton, our publicity chair, is looking for a replacement. We thank her for doing so much for the Society including getting the word out for our latest show. She is a capable and classy lady, an inspiration and a joy to know.

The **Pastels USA Show** is coming up at the time of this newsletter. Everyone on the board has helped with the show but none as much as our show chair, **Maria Sylvester**. What Maria does is a huge commitment of time and effort. Among other facets of her role, as a professional layout artist, Maria personally produced the first color catalogs for Pastels USA in 2006, and is repeating that considerable contribution to the society for 2007.

**Linda Roemisch**, our Ways and Means Chair, did a fantastic job in making the contacts to line up our sponsors for awards for the show. Linda has garnered more sponsors for awards than we have had in past years. Well done Linda; we love your style.

**Jerry Boyd** directs our PSWC Membership Show,

which was a huge success last fall. The quality of the work exhibited was outstanding - equal to the open shows, and a great tribute to the quality of our membership as well as to the promotion of the show. He also handles the work shipped to PSWC's exhibits; we are deeply grateful for his work there, as well.

Finally, thank you to **Margot Schulzke**, our Newsletter Editor. I don't know how she finds time with her Pastel Journal column, art, art teaching, travel and family, etc.

Please check the dates elsewhere in this newsletter for the upcoming Pastels USA Show at the Sacramento Fine Arts Center. Hope you can attend.

Wishing you all a joyful spring and summer season.

- *Priscilla Warddrip,*  
*PSWC President*

### Pastel Society of the West Coast 2007 Membership Information

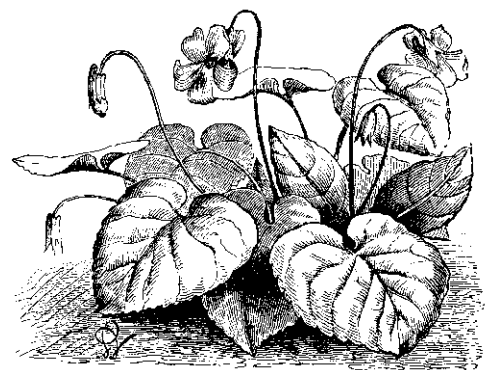
Associate Member: \$30

Signature or DP Member: \$35.

***Please remember maintaining signature status requires continued payment of dues each year.***

**Signature** status requires acceptance in 3 Pastels USA Open Exhibitions, and **Distinguished Pastelist** status requires 3 awards in Pastels USA in no more than a 5 year period.

☛ **Make checks payable to PSWC. Send to:**  
**Carol Ross, PSWC Membership Chair**  
**P.O. Box 1485, Carmichael, CA 95609**



## CALENDAR

May 8 - June 2,  
2007. Pastels USA  
Exhibition Dates,  
Sacramento Fine Arts  
Center, 5330 Gibbons,  
Carmichael, CA.



SFAC hours:

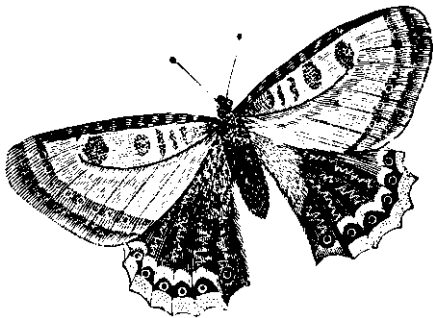
11:00 am to 7:00 pm Tuesday,  
11:00 am to 3:00 pm Wednesday  
to Saturday.

Closed Sunday and Monday.

**May 19, 1- 3 pm -- Reception  
and Awards Presentation at  
Sacramento Fine Arts Center**

**June 2 -- Pick up work at SFAC,**  
Pick up Hours: 3 - 4 pm

**June 30 -- General Meeting and  
Demonstration by Margot  
Schulzke, 1-3 pm, Sacramento  
Fine Arts Center**



## PASTELS USA 2007

**May 8 - June 2, 2007**

*Awards Reception May 19, 1-3 pm*

**Sacramento Fine Art Center, Carmichael, CA**

**Hours at SFAC are 11:00am - 7 pm Tuesday, 11:00 am - 3:00 pm  
Wednesday - Saturday. Closed Sunday and Monday.**

This year, Pastels USA will be at the Sacramento Fine Arts Center. It should be an outstanding show. We have exhibited at SFAC many times in past years, and it has been a delightful setting for our shows. Busloads of visitors often come from distances to SFAC shows, as the site is readily accessible to such vehicles. Local art groups (at reasonable distances from Sacramento) may want to organize bus trips to the show while it is displayed. Works usually come from at least twenty-five states, plus sometimes Canada and/or Mexico. Work has been submitted in the past from as far away as Taiwan, Turkey and Africa.

**Over \$10,000 in awards will be presented.**

We hope you will take advantage of the opportunity to see the show. ☺

**Airfloat Systems, the manufacturer of great, travel-safe cartons for shipping paintings, has been a regular donor to PSWC's open shows over many years. We appreciate their support.**

But now there is something more for our members to appreciate: Airfloat gives all PSWC members a generous 20% discount off their published retail prices. Who has used them, you ask, so you know whether they are trustworthy? Moi, your editor, always uses re-usable, Airfloat crates with reinforced sides, and have done so for about fifteen years. Check them out. 1-800-445-2580. ☺

### Paint Out in New Mexico

Hosted by Barbara Danser. This information came too late for our winter newsletter, but space may still be available: Just before IAPS, she plans to paint plein air at Ghost Ranch for 4 days/ 3 nights from May 5 - 8. This will not be a workshop. She reserved 6 top-of-the-line rooms for those nights, each with 2 twin beds and private bath. She invites our members to come and paint with her during those 4 days. You will explore the beauty of Ghost Ranch together. Sign-up will be available until the 12 reservations are filled. Interested pastellists may contact her directly for cost and availability at [barbara@danserart.com](mailto:barbara@danserart.com). ☺

## Make-a-Trade Bin

Current members can list (in brief descriptions!) art related items they are ready to sell or trade. (No cars, no desert real estate, baby strollers, and no used refrigerators, thanks.) We suggest you check EBay or other online service before pricing, to be sure you are offering at prices that are fair to both you and the potential buyer.

We take no responsibility for the quality or delivery of such items. That is between buyer and seller, or donor and whoever. Thanks to Denise Delgado for the suggestion.

What would you like to hawk? Please send in paragraph form to save space, to Make-A-Trade, c/o your editor.

## IAPS BIENNIAL CONVENTION 2007

by Linda Oslin, PSWC IAPS Liaison

The IAPS Convention is coming up fast – in Albuquerque, NM, May 11-13, 2007. The IAPS web site ([www.pastelinternational.com](http://www.pastelinternational.com)) states that there will be "...exciting pre-convention workshops being planned for May 9 and 10." We hope to see you there.

IAPS

P.O. Box 2057

Falls Church, VA 22042

### The First Annual Kaleidoscope Invitational Exhibition June 12 - August 1, 2007

This exhibit at the ARTS Building Gallery in Auburn, California is an outgrowth of the tremendous response to our highly successful 2006 **Pastels USA** show, which resulted in \$8,000 in sales.

This all-pastel show is sponsored by The Arts Council of Placer County, which has invited its selection of top pastel artists in the Northern California region to participate in a new exhibition. The new show will be part of the Auburn June Art Walk on June 14, 2007. We hope PLACER-ARTS will choose to make it an annual event.

This is a marvelous venue with its open loft ambiance and high pedestrian traffic. Over 3,000 visitors viewed the Pastels USA show at this location in 2006. Average attendance for this one evening at this venue is close to 2000 attendees. The ARTS building is located at 808 Lincoln Way in downtown Auburn. Free public parking is close by. Don't miss it.



## PSWC Member Websites

Over 50 PSWC member's websites are online at [www.pswc.ws](http://www.pswc.ws)

### Recent web updates:

► **Classes & Workshops** *The workshop listings published in this Newsletter are available on our website with E-mail & web links conveniently included!*

### Newly listed websites:

- Christine Debrosky, PSWC-DP - [www.christinedebrosky.com](http://www.christinedebrosky.com)
- Reif Erickson, PSWC-DP - [www.reif.com](http://www.reif.com)
- Anita Wolff, PSWC-DP - [www.anitawolff.net](http://www.anitawolff.net)
- Dotty Hawthorne, PSWC - [www.dottyhawthorne.com](http://www.dottyhawthorne.com)
- Kim Fancher Lordier, PSWC - [www.kimfancherlordier.com](http://www.kimfancherlordier.com)
- Eileen Serwer, PSWC - [www.eileenserwer.com](http://www.eileenserwer.com)
- Candace J. Vlcek, PSWC - [www.vickekarts.com](http://www.vickekarts.com)
- Barbara Batt - [www.barbarabatt.com](http://www.barbarabatt.com)
- Jackie Blue - [www.jacquelynblue.com](http://www.jacquelynblue.com)
- Margaret Fensterer - [www.margaretfensterer.com](http://www.margaretfensterer.com)
- Marsha Mobley Kilian - [www.marshakilianart.com](http://www.marshakilianart.com)
- Barbara Remley Martin - [www.remleymartin.com](http://www.remleymartin.com)
- Joan Sexton - [www.jsextonart.com](http://www.jsextonart.com)
- Laurajo Sherman - [www.laurajosherman.com](http://www.laurajosherman.com)

☛ **Are you a PSWC member with a website displaying your art-work?** If you would like a link from the PSWC website to your website, please e-mail your web address and PSWC signature status to [mailbox@debraturner.com](mailto:mailbox@debraturner.com) *Thanks for contributing!*

-Debra Turner, PSWC Web Director

## ALBERT MULLER MEMORIAL ART EXHIBITION

June 18 - June 30, 2007  
at the Sacramento Fine Arts Center

5330 B, Gibbons Dr., Carmichael, CA 95608

Juror: Joyce O'Conner

**Medium:** All painting mediums with no age restrictions

**Entrants:** Albert's friends and Marbo Barnard's former students

**Awards:** Ribbons for Best of Show, 1st, 2nd, 3rd, & five Merit awards

**Entry fee:** \$15 for up to 2 paintings

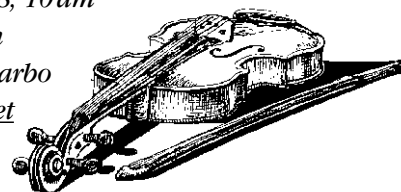
► **Deadline for entry forms:** June 13, 2007

**Receiving paintings:** Saturday, June 16, 10-12 am

**Hanging paintings:** Monday, June 18, 10 am

**Reception:** Saturday, June 23, 1-3 pm

► **For information:** Please contact Marbo Barnard, [marbobarnard@sbcglobal.net](mailto:marbobarnard@sbcglobal.net) or by phone at (916) 991-2708.



## EXHIBIT OPPORTUNITIES

"Pastels only" means the centuries-old medium of pastel, which by virtue of its 400 year-long history requires no adjective. That clearly means no oil pastels accepted. However, where a sponsoring society has used it, we've replaced "soft" with the more descriptive "dry," as is the usage in Belgium and Canada.

**Due date for slides listed first, if applicable:**

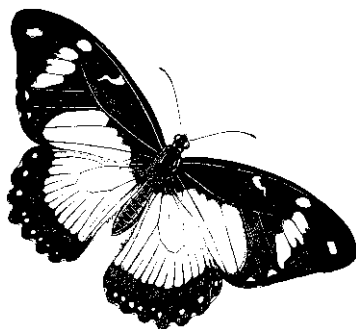
■ **May 15, 2007 Pastel Painters Society of Cape Cod** - Twelfth Annual For Pastels Only, On Cape Cod-2007.

Cash awards totaling \$3,000. August 1st-30th. Judge of Awards, Robert Carsten. PPSCC, For Pastels Only - 2007 c/o Lorraine Trenholm; PO Box 1942, Ignacio, CO 81137. Entry form: download at [www.pastelpainterssocietyofcapecod.com/exhibitions](http://www.pastelpainterssocietyofcapecod.com/exhibitions)

■ **May 16, 2007 International Artist Magazine - Art Competition.** Subject: Favorite subjects. Cash, subscription and publication prizes. Other competitions: Still Life and Florals, deadline 18 July 2007; People and Figures, 19 Sept. 2007; Landscapes, 14 Nov. 2007; Flowers and Gardens, 16 Jan. 2008; Seascapes, Rivers and Lakes, 19 March 2008. More specifics, [www.international-artist.com/competition](http://www.international-artist.com/competition).

■ **May 18, 2007 Postmark deadline. 20th Annual Northern National Art Competition** - Juror/Judge: Allan Peterson. Three \$1000 Awards of Excellence and over \$8500 awarded in prize money overall. NNAC, P.O. Box 916, Rhinelander, WI 54501; Or email your mailing address to Gallery Director Katy Ralph at [kralph@nicolet-college.edu](mailto:kralph@nicolet-college.edu); 715-365-4556

■ **May 19, 2007 Wyoming, Riverton: 7th Annual Riverton National Art Show and Sale**, June 8-18, 2007. \$2500 + cash awards. Prospectus, #10 SASE to Riverton Artists Guild, P O Box 6117, Riverton, WY 82501, or email mailing address to [rgreg2738@aol.com](mailto:rgreg2738@aol.com)



■ **May 31, 2007 Final deadline, Paint America Top 100 "Paint the Parks" Competition** - Call to Entries opened February 1, 2007. All media. The competition's overall winner claims a \$10,000 purchase award. Other artists in the "Paint the Parks" competition also have an excellent chance to receive additional cash purchase awards and prizes, such as a \$3,500 Grand Canyon Association Purchase Award, making it one of the richest art competitions in America. P.O.Box 4031 | Topeka, KS 66604 | 785.273.4500 | fax 785.273.4510 | [www.PaintAmerica.org](http://www.PaintAmerica.org)

■ **July 6, 2007, Connecticut Pastel Society 14th Annual National Exhibition**, W. Hartford, CT. Oct. 6- Nov. 4, 2007. Dry pastels only. More than \$10,000 in awards. Prospectus, send #10 SASE to Leslie Lillian Levy, CPS, PO Box 69, Kent, CT, or download from [www.ctpastelsociety.com](http://www.ctpastelsociety.com).

■ **August 31, 2007 Pastel Society of the Southwest**, Dallas, TX will have its 16th Annual National Open November 2007. Over \$4,000 in cash and merchandise awards. Juror, Richard McKinley, prospectus, #10 SASE to June Holloway, 7517 Vanessa Dr., Fort Worth, TX 79112 or [pssw.info](http://pssw.info).

■ **September 1, 2007 American Artist -Cover competition.** One work of art will be selected for the cover of each publication, and 10 finalists in each competition will be chosen for articles in the same issues and for magazine's website. Info: [www.myamericanartist.com/competitions](http://www.myamericanartist.com/competitions)

**For those who are wondering whether the water is warm or cold:** *The only way to find out if you are ready for big-time competitions is to enter. Pointers: Find out who the jurors are; check their websites to see whether your work might be a fit in a show they select. Then, don't put all your money on one horse. Enter two or three, or more. Read the submission requirements carefully. Do exactly as instructed. Last (but definitely not least): Make sure your slides are top quality; poor slides guarantee rejection. ☺*

## Member News-PSWC Members make the World Go 'Round!!

Congratulations! As always, many impressive accomplishments below – read on. The increasing national recognition and professional stature of our members is well demonstrated.

*Please note: ONLY email submissions will be published. (No attachments: they will not be opened.) Send workshop notices separately to the editor "in-chief" of the newsletter, at [schulzke@jps.net](mailto:schulzke@jps.net); don't combine those with awards & exhibitions. Thank you.*

☛ **Jacquelyn Blue's** painting, "Luminous Horizons", won second place in the Malibu Art Association's juried membership show. Her two-person show (along with JoAnne Unger, below) opened at The Topanga Gallery, 120 N. Topanga Canyon Blvd., Topanga, Ca. on April 10th and runs through May 6th.

☛ **Mary Lou Correia** has a pastel showing in the annual Brushstrokes competition through the month of April at the San Luis Obispo Art Center. She will also be representing PSWC at the 10th IAPS Exhibition at the von Liebig Art Center in Naples, Florida with two paintings: "Mediterranean Garden" and "Otters' Cove".

☛ **Judith Crowe** has exhibited twelve pastel paintings at Community Foundation in San Luis Obispo, CA.

☛ **Christine Debrowsky** will be presenting landscape demonstrations, "AM /PM light; Capturing the Glow," at the International Association of Pastel societies convention in Albuquerque, May 11-13.

☛ **Michael Engel** won the Holbein Award at the Pastel Society of Oregon's exhibition. He has also received a commission to create twelve paintings depicting the Greek Myth of Dionysos. The exhibit, which is based on "The Bacchae" by Euripides, will premiere at The Getty Villa in Malibu on May 4th.

☛ **Reif Erickson** had two pastels accepted for the California Art Club exhibit in Pasadena: "The Forge" and "Mountain Wonder". "Crescendo" from the Oregon coast, was one of the top 100 paintings in the nation for Paint America 2007. His original pastel "Capitol Walk" will be auctioned off at the Crocker Art Auction on June 2nd. Prints of this work will be available through Midtown Framing and Gallery (916-447-7558).

☛ **Lisa Fricker** has completed another year's inductee portrait commission for the Astronaut Hall of Fame. Honorees for 2007 are: Michael Coats, Steve Hawley, and Jeffrey Hoffman. They will be celebrated at Kennedy Space Center in May. Lisa is excited to have attained PSWC Signature Member status, with the acceptance of "Only the Little Ones" into the upcoming 21st International. April's Pastel Journal featured the Pastel 100, in which she won an Honorable Mention for "Clearing."

☛ **Bill Hosner** has just released a video filmed at Petoskey State Park in Petoskey, Michigan entitled "Painting the Figure en Plein Air" to a national audience. The video, shot by Artist Productions from Dallas Texas, was filmed in August 2006 at Petoskey State Park. Painting the Figure en Plein Air was produced as an instructional video for artists to walk them through the process of painting a figure out of doors. For more information or to order a copy please contact Gail Hosner at: Hosner Studios 3260 Siebenhar Way, Petoskey, Michigan 49770.

☛ **Kim Lordier's** work is featured at the Portola Art Gallery, by the Allied Arts Guild in Menlo Park, CA which presents Subtlety of Light: Landscapes in Pastel, April 2-30, 2007. An opening reception was held Saturday, April 7. "Subtlety of Light" explores narrow passages of light filled spaces within intimate settings of the California and southern Colorado landscape. Lordier's paintings mix the traditional concepts of impressionism and realism, with special regard for the tonal relationships of

## WELCOME NEW MEMBERS!

**Members total 392; PSWC Signature Members 131, 22 of whom are also PSWC Distinguished Pastellists, or DP. Four are Pastel Laureates™. We have 261 Associate Members. 23 of our members are also signature members of the Pastel Society of America.**

### WELCOME TO OUR NEW MEMBERS

- Barbara Batt, Forest Ranch, CA
- Capel Campbell, Odessa, TX
- Sherri Cassell, Camarillo, CA
- Margaret Fensterer, Oklahoma City, OK
- Virginia Gatlin, Grants Pass, OR
- Grace Hasbrook, Portola Valley, CA
- Gaile Johnston, Emeryville, CA
- Ellen Milinich, Visalia, CA
- Adelle Platt, Gualala, CA
- Laurie Potter, Bellingham, WA
- Cindy Radavich, Post Falls, ID
- Betty Rothaus, Walnut Creek, CA

- Jennifer Rowe, Folsom, CA
- Christina Sagartz, Winston-Salem, NC
- Judy Shoemaker, San Diego, CA
- Nancy Silvia, Santa Fe, NM
- Erick Werts, Surprise, AZ
- Anita West, Santa Fe, NM
- Alfred Zerries, Huntington, NY

*Please be alert to artists who you think might benefit from PSWC membership and let us know who they are. We'll get a membership application off to them. (Email addresses help.) If you would like to be a regional representative in your area, please let us know.*

*PSWC is the largest pastel society outside New York - with a national constituency. Please keep telling your friends about PSWC. Although our members are concentrated more on the West Coast, as you can see above, PSWC Members hail from all over the United States. ☛*

.....PSWC Member News - continued on pg. 7 ▶

## FROM YOUR EDITOR...

—Margot Schulzke, ©2007

**The word is in on Dry vs. Soft**, and the consensus is: words matter. You may (or you may not!) remember our discussion in the last newsletter, about which word is a better adjective to apply to historic, traditional pastels. Not one artist who wrote in argued in favor of the unscriptive term “soft”.

To recap, you may remember Belgian artist **Mathieu Weemaels** referring to the medium in *The Pastel Journal* as “dry” pastels. Mathieu advised me that “dry” is the term in use in Belgium, and he expects that is also the case in France. Later I learned the term is also used in Eastern Canada, which suggests that is used in France – since French Canada links those regions.

**I asked for your comments** about which term you prefer to distinguish between historic pastels and the relative newcomer, oil pastels. I asked readers to tell me which term they felt was more descriptive, appealing and/or marketable. Which term expressed your sense of the medium more? And I asked if you think of pastel as a “soft” (associations: weak, emasculated, etc.) medium, or a powerful, vibrant, expressive medium? Do you find it confusing, when the consistency of pastel sticks is variously soft, medium and hard, to find the medium generically referred to as “soft”? **Or** ... are you satisfied with the “soft” term?

The above assumes pastel requires an adjective. Many of us think it does not, just pastel, as it has been for four hundred years and as it is still invariably listed in museums and better galleries. However, if we are now determined to use an adjective, let's make it one that is 1) descriptive and 2) calls up complimentary images. And that is where we left it, in the last newsletter.

**Some responses** were particularly thought-provoking. **Sunny Sorensen** of Hathaway Pines, CA, wrote: “The word ‘pastel’ has more than one meaning, and pale, soft color is generally the association the public attaches to it. I have yet to figure out why pastels are even called “pastels,” when I see the bright, bold colors of Carl Dalio or dark moody landscapes of **Doug Dawson**, which hardly make a case for ‘pale, soft, color!’ In reality, ‘pastel’ (is) dry pigment, in varying degrees of hardness and softness. Why not call it that?” **Elisha Fields, Jennifer Rowe, Jerry Boyd** and **Connie Souigny** share Sunny's view that the “soft” description of pastel is a source of confusion, and would prefer to see “dry” used in its place. **Steve Hill**, president of the Northwest Pastel Society,

observes, “Lately, I've taken to a description of ‘pure-pigment pastel,’ not so much to try to describe the stick itself, but to open a dialog with anyone who asks, ‘What's that?!’ I usually say ‘It's what the cave painters used,’ which removes the stigma of an emasculated medium and also allows further dialog like, ‘It's the exact same pigments all other paints are made from, but without the additives that make them turn dark or fade or require restoration over time.’

When I replied to Steve, noting the obvious merit of his term, he replied, “Yes, when you stand naked under the stars and shout, PURE PIGMENT PASTEL!!! ... it has a certain truthful ring to it, unlike that of those poor brush painters who require even more verbosity to describe diluted and chemically dependant mediums.” Good going, Steve.

We also heard from **Mark Leach**, Treasurer of The Pastel Society, London, England, and author of *Raw Colour with Pastels*. He would prefer (as your editor would) to have no adjective at all used for this 400-year-old medium that got along without one quite well, thank you, for some 395 years. But if one **MUST** be used, then “dry” would be his choice, not “soft.”

**Mikki Dillon**, editor of the Southeast Pastel Society newsletter, wrote, “‘Dry’ is a much better term, especially when thinking about the hard pastels that most of us use anyway.” Amen. It causes considerable confusion. I have students asking, “What do you mean when you say soft pastels? Are hard pastels a different medium?”

Now, as attractive as I find Steve Hill's “pure-pigment pastels,” it appears there is already a substantial part of the globe using the “dry” term. If we really want to rid the medium of a soggy-broccoli connotation, we may be wise to take advantage of that. “Dry” apparently works for many artists. (If we apply an associations test to that term, try dry wit: sophisticated humor.) And brevity has merit: “dry” meets that standard as well.

As Sunny Sorensen points out above, the word “pastel” has enough image problems without compounding the problem by calling it “soft.” (One begins to wonder if we aren't marketing nasal tissues.)

**Our chances for rescuing** the medium from emasculation will be greatly increased if those who read this column will raise the question to those who print supply and exhibition catalogs and those who manufacture and market pastels. Exhibitions can be described in terms that enhance instead of detract from the medium.

..... From Your Editor continued on page 8 ►



## General Meeting & Demo - Margot Schulzke, PSWC-DP

Saturday, June 30, 2007  
Sacramento Fine Arts Center, 5330 Gibbons, Carmichael, CA

### GENERAL MEETING:

**Margot Schulzke, PSWC-DP**, will be our demonstrator. She is author of *The Painter's Guide to Design and Composition*, juror of awards for

**Pastels USA** in 2008, and PSWC's 2006 Pastel Laureate™ Award winner. You are welcome to bring friends.

- *Tina Moore, vice-president and program coordinator.*

At the last general meeting on January 20th, 2007, **Mick Sheldon** demonstrated. Mick frames his own work and teaches his students economical framing at American River Jr. College. One interesting aspect of his demonstration was that when using Plexiglas it should be sprayed lightly with an anti-static plastic cleaner and wiped with a clean,

soft cotton cloth - never with paper towels, which will scratch the surface. It should be sprayed and polished before framing a least 3 times to eliminate the static draw of pigment. After framing the process should be repeated on the outside of the Plexiglas. Plexiglas is only recommended as a short duration cover for soft pastel paintings.

*Thank you Mick, for sharing with us.*  
- *Priscilla Warddrip*



..... PSWC Member News - cont'd from page 5 ▶

space on a two dimensional plane. More information: [www.kimfancher-lordier.com](http://www.kimfancher-lordier.com). Gallery is located at 75 Arbor Road Menlo Park, CA 94025; (650) 321-0220. Hours: Mon.-Sat. 10-5pm.

☛ **Tegwin Matenaer** has put together a pastel exhibit entitled "Footprints" to be shown at Fator's Custom Frames and The Silk Purse Gallery, 2600 Bechelli Lane, Redding, CA. The concept, 'leaving only footprints' echoes the various moods of nature in her paintings, from locations around the world. From Mar 1-5 she attended ART EXPO a/Art-Exchange, in New York City. Tegwin has been included in the 2007 edition of Marquis' Who's Who of American Women, 26th edition. Nov. 3-26, 2006, her work "As Time Goes By" was exhibited with the 15th Annual National Exhibition, Pastel Society of New Mexico.

☛ **Clark Mitchell**. Clark Mitchell, Recent Pastels, opened March 8 through April 7, at the John Pence Gallery, 750 Post Street, San Francisco. The entire show was online at [www.johnpence.com](http://www.johnpence.com).

☛ **Barbara Reich** was recently published in "The Best of Michigan Artists and Artisans" book series, receiving 3rd place in Pastel for her painting "Field of Pheasants". Barbara also had a painting accepted in the 10th Juried IAPS Exhibition in Naples, FL.

☛ **Margot Schulzke's** recent book, *The Painters' Guide to Design and Composition*, has sold at approximately double the average rate over its first ten months. She will be at The Pastel Journal booth at IAPS to autograph books, Saturday May 12, 11-12 noon. Her work appears in Kaleidoscope, an invitational show at PLACERARTS June 12 - August 1, at 808 Lincoln Way in Auburn, CA, as well as in the Pastels USA Hall of Fame, May 8-June 2. In 2008, she is the juror for the Northwest Pastel Society National Exhibition in Tacoma, WA, and the PSWC 22nd Annual International Open, to be held at the Haggin Museum in Stockton, CA.

☛ **Doris Stirm** received the Diamond Award from the San Mateo County Arts Commission and Art Share for many years of teaching art, serving as an inspiration to many students over the decades and as a tactful and affirming judge. She continues to paint, teach and display her paintings in many locations.

☛ **JoAnne Unger's** painting, "Still Life with Chinese Vase" won first place in the Malibu Art Association's juried Membership Show on March 3. Her two-person show (along with the above-mentioned Jacqueline Blue) featuring a series of still life paintings, opened at The Topanga Canyon Gallery on April 10th and runs through May 6.

☛ **Claire Schroeven Verbiest's** pastel work will be featured in a retrospective exhibition at The Triton Museum of Art, 1505 Warburton Ave, Santa Clara, CA from May 1 until June 30, 2007. The opening reception is scheduled for Friday, May 11, 7 - 9 PM. More info, [www.tritonmuseum.org](http://www.tritonmuseum.org). ☛

## We'd like to blow your horn for you!

Send your news—email only—to the Member News editor, Lisa Fricker, at [fricker-studio@mindspring.com](mailto:fricker-studio@mindspring.com). (Please note address correction.) Items should be in third person (he/she, not I), paragraph format as a news item - using standard 12 point type; no attachments, maximum 100 words. Items sent by regular mail will not be included; we regret that, but it requires too much retyping time: we are all volunteers. Everyone now has email, or access to it—so no postcards or flyers, please.

☛ **NEXT NEWSLETTER DEADLINE: SEPTEMBER 1, 2007**

## Scholarship Program

Each year the Pastel Society of the West Coast awards a \$500 scholarship to a high school graduate who is going on to major or minor in fine art in college. We have had more applications this year than ever before. The 2007 winner will be announced at the Pastels USA reception.

This is an annual event. If you know a senior in High School this fall who is studying art: PSWC offers a \$500 scholarship each year. Application **deadline each year is March 31st**. You can download application forms for 2007 from the PSWC website: [www.pswc.ws](http://www.pswc.ws), or contact chairperson Rosemary Boissonade or President Priscilla Warddrip. Recipient must be a high school junior or senior and must enroll as an art major or minor at an accredited college OR attend a recognized arts school, such as The Art Student League of New York, the Art Institute of Colorado (Denver) or San Francisco Art Institute, to receive the funds. Students anywhere in the country are eligible to apply. If you have a friend or relative who might qualify for next year's award, go the website and download a form to send them. ☛



.....From Your Editor continued from page 6 ►

It doesn't hurt to ask, or even to badger, if the cause is just. I'll be approaching a few manufacturers and distributors directly with this column, as well as passing on the responses to the editors of *The Pastel Journal*.

Whether you stand under the stars, naked or otherwise, shouting "pure-pigment pastels!" or "dry pastels!" is your call, but let's chuck the fear factor. No

permission is required ... from anyone. Artists who use the medium should have the last say in how it is described, not the manufacturers. While I raise my glass to bold, sensitive, expressive, vivid, witty, dry pastels, use the term you or your society prefers. Eventually it will filter out to one that is intelligible and marketable.

I'd welcome further comments. Write me at [schulzke@jps.net](mailto:schulzke@jps.net). Again, please

## Dues were due for 2007 on January 1, 2007

☛ Please send member inquiries, dues payments, etc.:

to Membership Chair **Carol Ross**, contact info: [carolross01@earthlink.net](mailto:carolross01@earthlink.net), 916-944-3914

c/o PSWC, P.O. Box 1485, Carmichael, CA 95609

**Make checks payable to PSWC.**

\$30.00 for Associate Membership, or \$35.00 for Signature / DP Membership

**Please note:** Members who are not current will not have work accepted in Membership Shows or Pastels in Light.

**Maintaining Signature or DP status requires continued payment of dues each year.** Restoring member status requires starting over, not just paying back dues. Attaining Signature status requires acceptance in three Pastels USA Open Exhibitions.

As noted elsewhere, to win Distinguished Pastellist standing, artists must win three awards in Pastels USA in no more than a five-year period. We believe PSWC's is the most rigorous standard for upper-level distinction in any major pastel society; once attained, you probably will not want to lose it. We notice when an artist's pastel society membership status is listed in magazines, ads, etc., that apart from PSA, PSWC is the most often mentioned. PSWC and PSWC-DP are signatures that matter.

**Reasonable dues:** PSWC membership is a bargain, and we are proud to provide our new, beautiful and free Pastels USA catalog free of charge to all who attend Pastels USA.

☛

put "dry vs. soft pastel" on the subject line. Many thanks for contributing your thoughts.

**Next question:** now that archival finish sprays are available, please give some thought to whether it is responsible not to use them. It will improve the image of the medium with the public if we make a broad effort to prevent flaking.

☛

## Classes and Workshops



PSWC Signature artists and Distinguished Pastellists are invited to list classes and workshops in the PSWC newsletters. Please send exact wording to be used,

in third person and single paragraph format, please. New listings should be sent in for each calendar year.

Workshop fees will not be listed.

When submitting a listing, instructor's PSWC Signature/Distinguished Pastellist status must be included; listings will not be posted otherwise.

☛ **Doug Dawson Workshops:** For locations and dates, email Doug [doug-dawson8@cs.com](mailto:doug-dawson8@cs.com). 303/421-4584.

☛ **Christine Debrosky** will lead a workshop June 25-29 "The Late Light" for the Woodstock School of Art. Designed for the intermediate to advanced student, the focus will be on capturing the liquid golden light of a summer afternoon in the Hudson Valley. (845) 679-2388, website is [www.woodstockschoolofart.org](http://www.woodstockschoolofart.org), or [www.pastelinternational.com](http://www.pastelinternational.com).

☛ **Margaret Dyer** will conduct a three day workshop "The Figure In Pastels" from June 14 to 16, 2007 at the Palette & Chisel Academy of Fine Arts, Chicago. Live models. Contact Kathie Newman at [queenvartz@aol.com](mailto:queenvartz@aol.com) or 708-448-0607.

☛ **Reif Ericksen** Classes: Thursday afternoon from 3-5:30 pm and Friday Morning 9-12 noon at the Arts Building 808 Lincoln Way, Auburn. If you are interested in a Thursday night class 6:30 to 9pm call 530-887-9565. Space limited to 10 students. Classes ongoing. Bring your own reference material to work from. Format varies with student interests, but follows his book "Four Steps" in developing work and overcoming challenges.

☛ **Alan Flattmann.** [www.alan-flattmann.com](http://www.alan-flattmann.com), [art@alanflattmann.com](mailto:art@alanflattmann.com). Or call 985-845-4930. Pastel and watercolor.

☛ **Terri Ford** Workshops June 8 & 9, 2007, California Bay Area. October 15-18, 2007, Beaune, France. For further info: 408-286-3801, [tford@terrifordart.com](mailto:tford@terrifordart.com), [www.terrifordart.com](http://www.terrifordart.com)

☛ **Bob Gerbracht** (PSWC Pastel Laureate™) Workshop schedule: contact at [bgerbracht@sbcglobal.net](mailto:bgerbracht@sbcglobal.net). Portrait and figure painting at Asilomar Conference Center in Pacific Grove July 8-13. (510) 741-8518, website: [www.bobgerbracht.com](http://www.bobgerbracht.com).

☛ **Albert Handell** and **Anita Louise West**—(Albert is a PSWC Pastel Laureate™) Contact them at 505-983-8383, and ask for Virginia Stark, or write to P. O. Box 9070, Santa Fe, NM, 87504-9070, [www.alberthandell.com](http://www.alberthandell.com); or email [alberthandell@msn.com](mailto:alberthandell@msn.com). View his website to read about their new Paint-A-Long Mentoring Program.

☛ **Colleen Howe.** Focus is on a strong value structure at the beginning of each painting. View her calendar at [www.colleenhowe.com](http://www.colleenhowe.com)

☛ **Bill Hosner**— Bill Hosner Workshop / Demonstration Schedule 2007-08: IAPS Biennial Convention, Albuquerque, New Mexico: Demo #1: Painting the Figure Out of Doors May 11, 2007 3:30 – 6:00 p.m. Demo #2: What it Takes to Paint a Nocturne from Life May 12, 2007 12:30 – 2:30 p.m. September 10 – 14, Mackinac Island, Michigan

Painting the Figure En Plein Air, Five day all-figure workshop, (231) 348-3326. October 1-5,

Pastel Painters Society of Cape Cod, The Art of Observing Outdoor Light, (508) 695-0016

June 23 – 27, 2008, Fechin Art Workshops, San Cristobal, New Mexico; Painting the Figure En Plein Air (505) 776-2622

☛ **Haesoon Matz** Classes: Every 2nd and 3rd Mondays, 10 to 2:30 pm, at Southgate Mobil Home Estate, 3201 Florin Road, Sacramento, continuous.

Call Haesoon at 916/442-8533.

☛ **Richard McDaniel** Plein Air Landscape Painting. For details, visit [www.richardmcdaniel.com](http://www.richardmcdaniel.com).

☛ **Richard McKinley**, at [www.mckinleystudio.com](http://www.mckinleystudio.com) for 2007 workshops.

☛ **Tina Moore:** Portraits and Figures in Living Color, workshop July 11 to 15 at St. Mary's Art Center, Virginia City, Nevada. Call 775-847-7774, or [www.stmarysartcenter.org](http://www.stmarysartcenter.org).

☛ NEW! Gig Harbor, Washington. July 16 ? 19, 2008. 4 days. Sponsored by **Northwest Pastel Society**. Contact Beth, [bethbrooksart@comcast.net](mailto:bethbrooksart@comcast.net)

☛ **Linda L. Oslin** offers day classes, Tuesdays, 1-4 p.m., at the Paradise Art Center, Paradise, CA. Phone 530-872-0854 for details.

☛ **Maggie Price** Workshops info: at [www.MaggiePriceArt](http://www.MaggiePriceArt), email [pcstudios@cableone.net](mailto:pcstudios@cableone.net), or 505-294-7752.

☛ **Margot Schulzke** Focus on design & technique; all levels – some experience helpful. 2007: July 13 -14, Sacramento, CA, at SFAC; Marie, 916-205-9861 or [marie@dixonart.net](mailto:marie@dixonart.net). Hope Valley, CA, Sept.30 - Oct.4, 5 days; Linda, [artandsoul@hughes.net](mailto:artandsoul@hughes.net), or 530-265-9213. 2008: March 31 – April 4, Eugene, Oregon, 5 days; Dotty, [emerald@epud.net](mailto:emerald@epud.net). July 16 - 19, Gig Harbor, WA. 4 days; call Beth, [bethbrooksart@comcast.net](mailto:bethbrooksart@comcast.net). Sept. 13 – 20, Puy-l'Eveque, France, 7 days in foothills of the Pyrenees, sponsored by Great American Artworks. Contact: [pastelguy@aol.com](mailto:pastelguy@aol.com) or [schulzke@jps.net](mailto:schulzke@jps.net). Auburn Classes: next 8 wk session starts Sept. 2007; info, [schulzke@jps.net](mailto:schulzke@jps.net), or call 530-878-7510. See [www.margotschulzke.com](http://www.margotschulzke.com).

☛ **Anita Wolff** Classes, Fridays only by appointment; Camino, CA. [www.anitawolff.net](http://www.anitawolff.net); (530) 644-6814 ☛

**NEW!** The workshop listings on this page are also available on our website at [www.pswc.ws](http://www.pswc.ws). Email and web links are included!



P.O. Box 4518,  
Stockton, Ca. 95204

Non-Profit  
Organization  
U.S. Postage  
**PAID**  
Permit 150  
Auburn, CA

Pastel Society of the West Coast

Spring/Summer 2007

## PASTEL SOCIETY OF THE WEST COAST

**PRESIDENT; TREASURER:**  
Priscilla Warddrip  
[art\\_future@hotmail.com](mailto:art_future@hotmail.com)  
916-652-0304

**WAYS AND MEANS:**  
Linda Roemisch  
[artandsoul@hughes.net](mailto:artandsoul@hughes.net)

**VICE PRESIDENT:**  
Tina Moore  
[mooregrafix@comcast.net](mailto:mooregrafix@comcast.net)  
(President as of June 2007)

**RECORDING SECRETARY:**  
Marsha Mobley Kilian  
[marshakilian@yahoo.com](mailto:marshakilian@yahoo.com)  
916-630-5546

**NEWSLETTER:**  
Margot Schulzke  
[schulzke@jps.net](mailto:schulzke@jps.net)  
530-878-7510

**EXHIBITION CHAIR:**  
Tina Moore  
[mooregrafix@comcast.net](mailto:mooregrafix@comcast.net)

**MEMBERSHIP SHOW CHAIR:**  
Gerald Boyd  
[jerry@geraldboyd.com](mailto:jerry@geraldboyd.com)

**OPEN SHOW CHAIR:**  
Maria Sylvester  
[sylvester2666@sbcglobal.net](mailto:sylvester2666@sbcglobal.net)  
530-887-0733

**MEMBERSHIP CHAIR:**  
Carol Ross  
P.O.Box 1485,  
Carmichael, CA 95609  
[carolross01@earthlink.net](mailto:carolross01@earthlink.net)  
916-944-3914

**PUBLIC RELATIONS:**  
Joan Sexton  
[jsextonart@aol.com](mailto:jsextonart@aol.com)  
916-985-6023

**MEMBER AT LARGE:**  
Jim Tanovitz, Art Ellis Inc.  
2508 J St. Sacramento, CA  
916-448-1875

### ADMINISTRATIVE STAFF

**WEB DIRECTOR:**  
Debra Turner  
[mailbox@debraturner.com](mailto:mailbox@debraturner.com)  
707-447-3960

**SCHOLARSHIPS:**  
Rosemary Boissonade

**RECEPTIONS:**  
Lucinda Johnson

**IAPS LIAISON:**  
Linda L. Oslin  
[loslin1@mail.csuchico.edu](mailto:loslin1@mail.csuchico.edu)  
530-872-0854

**HISTORIAN:**  
Open

**GENERAL MTG. HOSTESS:**  
Jane McKenzie

**AREA CALLING COORD:**  
Fran Bristow

**REGIONAL REPRESENTATIVES**  
Patricia Boes, Long Island  
City, NY 11103

Sandy Bonney  
Brookings, Or  
(541) 469-1085

Nell D. Fischer  
Pickerington, Ohio

Cynthia Hamilton  
216 Yarbrough Ln.  
Redwood City, Ca 94061

Peggy Nichols  
Los Angeles Ca 90048  
213-852-7132

Peggy Tibbs  
Fresno, Ca.

Dianne Wyatt  
Sheridan Wy. 82801  
307-5627